

University Safety Survey Report September 2024

Office of Public Safety
Office of University Initiatives & Policy

Table of Contents

Introductory Letter	3
I. Executive Summary	4
A. Survey Goals	4
B. Key Survey Findings	4
II. Survey Results	5
A. Perceptions of Safety on Campus	5
B. Safety Priorities and Programs	12
C. Safety Communication	19
III. Looking Forward	24
IV. Appendix A: Survey Methodology	26
V. Appendix B: Survey Results by Question	33

Dear U of A Community,

As a Tucson native, I am honored to serve as the Chief Safety Officer for the University of Arizona. My priority is to provide a safe environment for students, faculty, staff, and everyone who visits and enjoys the university. Before working at U of A, I spent 24 years with the Federal Bureau of Investigation, including leading the FBI's Tucson Office.



On October 5, 2022, we lost Dr. Thomas Meixner, a valued and esteemed faculty member at the university, as part of a tragic shooting on campus. Our community was deeply affected by this profound loss. Since then, the university has taken many steps to improve the safety and security on campus. The university hired the PAX Group, LLC, nationally recognized security experts, to conduct an independent review of safety on campus. Their review identified 33 recommendations for improved safety protocols on campus and collaborative work began immediately in Spring 2023 to implement these recommendations.

The Office of Public Safety (OPS) was created in May 2023 to meet the safety and security needs of the university and to increase collaboration between the many offices that do this work across campus. Over the past two years, the Office of Public Safety has been intently focused on maintaining a safe and inclusive campus environment through our office's core values which are to promote safety, facilitate learning, empower through education, foster awareness, listen & respond, and increase transparency. To help achieve these goals and hear directly from the university community, we launched the University Safety Survey in Spring 2024.

I am proud to share the results of this survey with the campus community. The questions we asked were topics I felt were important to know in order to take meaningful, impactful action. The insights we gained have been and will continue to be invaluable to guiding our efforts. We remain committed to engaging with and learning from our community members to continually improve our safety practices.

As always, if you have any questions or concerns regarding safety, you are welcome to contact my office at publicsafety@arizona.edu.

Thank you for your time and partnership.

A handwritten signature in black ink that reads "Steve". The signature is written in a cursive, slightly stylized font.

Steve Patterson
Vice President and Chief Safety Officer
Office of Public Safety

I. Executive Summary

The Office of Public Safety (OPS) and University Initiatives & Policy (UIP) collaborated in spring 2024 to administer a University Safety Survey. The objective of the survey was to better understand the experiences of students, faculty, and staff related to campus safety and security at the University of Arizona.

The survey explores a wide range of topics including respondents' sense of safety on campus, views of safety-related communications, interest in learning more about recent safety enhancements, and input on future safety initiatives. Survey results are being used to guide institutional changes and initiatives aimed at improving campus safety.

The safety survey was administered from March 27 - April 15, 2024 and sent to all faculty, staff, students, and Designated Campus Colleagues (DCCs). In total, 3,076 responses were collected, representing about 4.5% of students, staff, and faculty. Individual responses are considered confidential. However, aggregate data has been analyzed in order to identify trends and make data-informed recommendations. A description of the survey methodology can be found in Appendix A and the complete survey results by question are included in Appendix B.

A. Survey Goals

The goals of the safety survey were to:

1. Identify campus safety strengths and opportunities for improvement.
2. Better understand the community's feeling of physical safety and awareness levels of available resources.
3. Use results to make data-informed decisions that will continually improve campus safety.
4. Collect longitudinal data through regular administration of the survey that will allow the University to identify trends and track progress over time.

B. Key Survey Findings

The findings from the 2024 survey provide current data about perceptions of safety as well as a baseline for future assessments. Some key findings explored in this report include the following:

- When asked if there is a specific place on or near main campus where respondents do not feel safe, 59% of respondents said no. However, there are important differences in feelings of safety by role and among key demographics including gender identity, sexual identity, and race and ethnicity.

- When asked to identify a location on a campus map where respondents feel the least safe, many identified parking garages, buildings with broad public access, and busy streets or intersections at the edges of campus. The coordinates from these data are being used to inform physical security upgrades.
- Most respondents indicated that physical security improvements implemented by OPS, including classroom door locks, security cameras, and restricted access to buildings (CatCard access), make them feel safer on campus.
- Respondents expressed overwhelming support for the expansion of mental health services for students and employees. Increasing sexual assault awareness and prevention programming was also a top priority identified in the survey results.
- Most respondents stated they would contact UAPD in an emergency. However, there are subtle but important differences in the likelihood of contacting UAPD by role and among key demographics including gender identity and race and ethnicity.
- Most respondents agree or strongly agree that emergency information is readily available. At the same time, there is wide variation in the awareness and perceived effectiveness of various communication channels used during emergencies.
- A majority of respondents are in favor of more safety training and drills, particularly students who may be more accustomed to such training based on their K-12 schooling experiences.

II. Survey Results

In this section, key data points from the University Safety Survey are explained and contextualized within the current university climate and in light of ongoing safety initiatives being implemented on campus. For the complete survey results by question, see Appendix B.

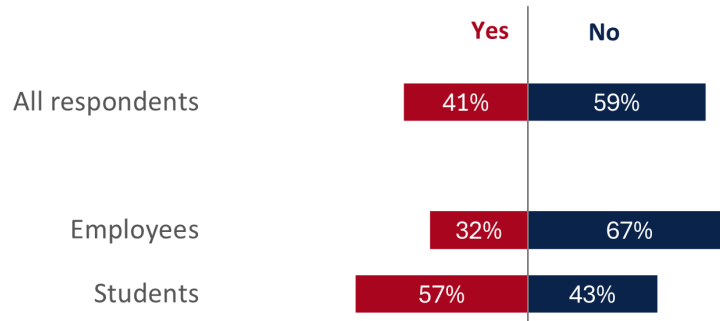
A. Perceptions of Safety on Campus

1. About six-in-ten say there are no places on campus where they do not feel safe.

Respondents who spend time on the University of Arizona main campus at least a few times a year, including University of Arizona Health Sciences campus, were asked whether there is a place or places where they do not feel safe on campus. While most (59%) said “no”, about four-in-ten (41%) said there are places where they do not feel safe. A larger share of students than employees reported feeling unsafe somewhere (57% and 32%, respectively).

Figure 1: Is there a place on campus where you do not feel safe?

A majority of respondents said "no," however more students said "yes" than employees.



These results are in line with OPS's understanding of the university community. Students, typically younger than the average university employee, may be living away from home for the first time, and are being exposed to many new places, people, and experiences. Students also tend to frequent campus during the evenings and at night more regularly than employees, which may increase feelings of being less safe.

The survey also shows some important differences in feelings of safety among key demographics such as gender identity, sexual identity, and race and ethnicity. Across roles, respondents who identified as women reported feeling unsafe somewhere on campus at higher proportions than those who identified as men (45% of women overall compared with 26% of men). Respondents who identify as genderqueer, nonbinary, questioning, transgender, or agender also report feeling unsafe at higher rates than men (54% vs 26%). And, a smaller proportion of respondents who identify as heterosexual report feeling unsafe somewhere on campus (37%) than those who identify with minoritized sexual identities such as gay or lesbian, bisexual, queer, questioning, or asexual (49%).

Compared with white non-Hispanic respondents, a higher share of Hispanic or Latinx respondents say there is somewhere on campus where they do not feel safe (47% of Latinx respondents compared with 39% of white respondents). This difference is particularly pronounced among graduate students (71% vs. 54%).

Action:

While it is encouraging that the majority of respondents (59%) did not identify any locations on campus where they feel unsafe, the survey results have highlighted areas where OPS can increase outreach. To address these concerns, ongoing community dialogue with all segments of the Wildcat community will play a key role in shaping future safety initiatives.

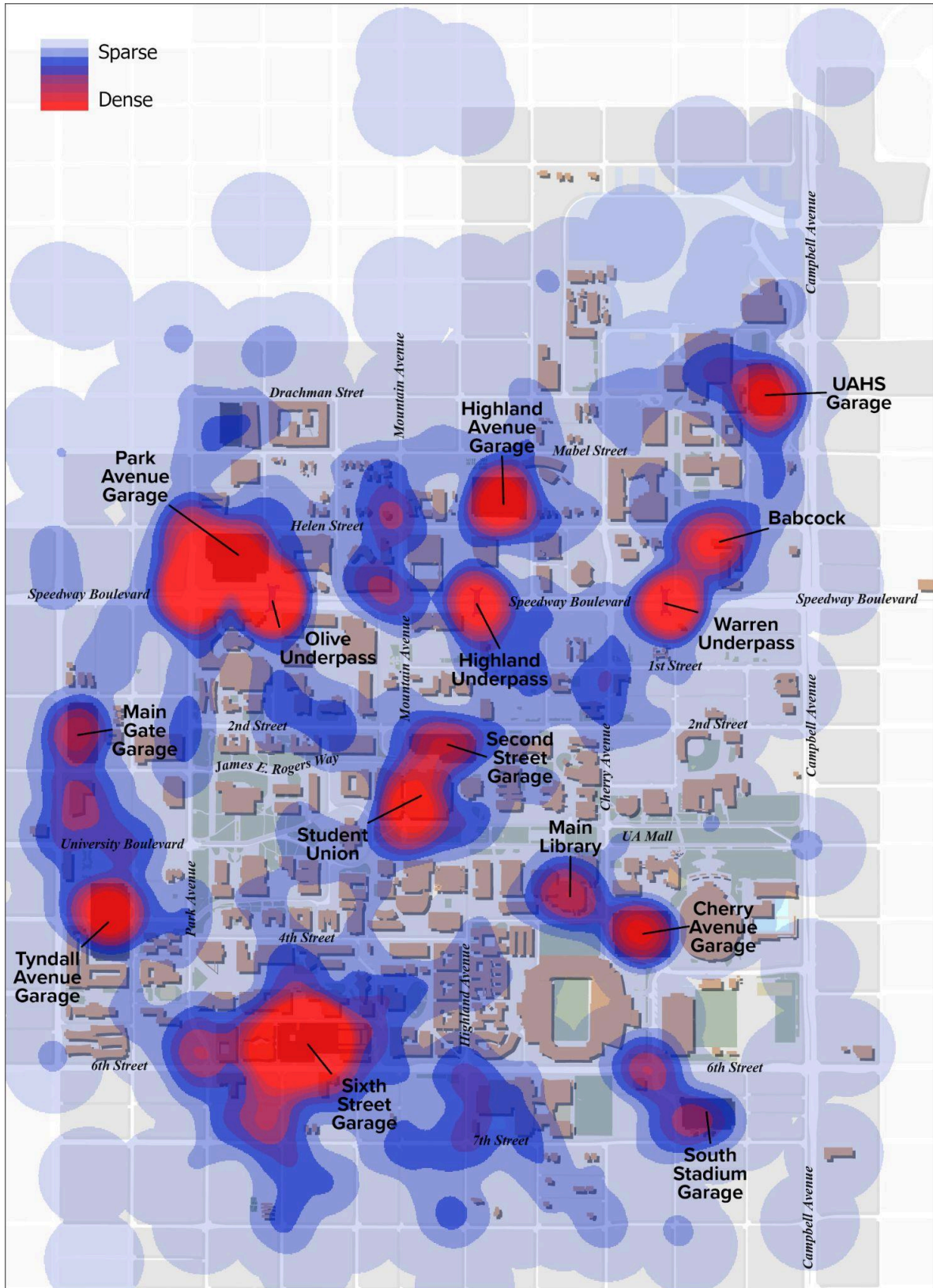
The creation of safety groups, such as the [Campus Safety Commission](#), represents an initial step in diversifying conversations around campus safety improvements. Expanding focus groups and other outreach efforts will remain a priority for public safety leaders as OPS continues to enhance the university's understanding of safety issues and implement holistic solutions to mitigate risks and safeguard the community.

Educating students about best practices for safely navigating campus, such as staying in well-lit areas, traveling with a friend, and being aware of physical resources like Emergency Blue Light Phones, may help to decrease concerns. Additionally, OPS continues to implement physical security upgrades like increased lighting and security cameras in key areas.

2. Respondents identified key areas of concern, including parking garages and intersections.

Of the respondents who had safety concerns, the majority identified parking garages, buildings with broad public access, and busy streets or intersections at the edge of campus, particularly at night.

Figure 2: Heat map of key locations where respondents feel less safe



These “hot spots” on the campus map are aligned with broader safety perception trends. Parking garages in any urban context are frequently seen as less-safe locations due to decreased visibility, concerns of theft, and the close proximity of cars and pedestrians. Additionally, busy intersections on the perimeter of campus are seen as less safe due to the high volume of traffic that passes by on a regular basis.

Action:

The underpasses located on Speedway Blvd are also a known concern for some pedestrians, especially at night. The presence of proper lighting and Emergency Blue Light Phones can help mitigate concerns, and OPS and [University Facilities Services \(UFS\)](#) continue to evaluate these spaces. Efforts to improve lighting and signage in these locations are ongoing.

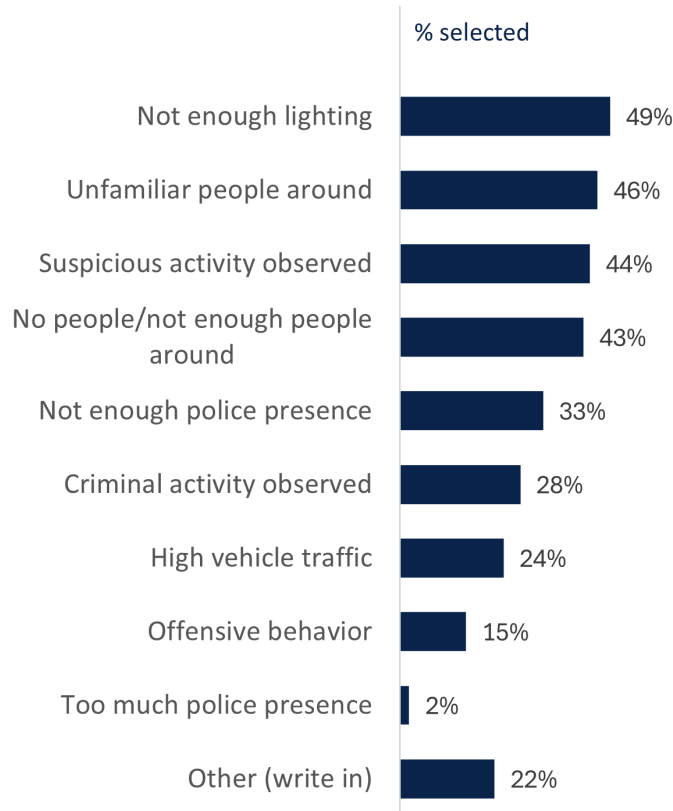
This heat map will continue to be a valuable resource for OPS to understand overall perceptions of safety on campus. By pinpointing areas of common concern among respondents, OPS can prioritize locations for additional safety enhancements.

3. Reasons for feeling unsafe focus on lighting and other people.

When asked why respondents felt less safe in the identified areas, commonly selected reasons included not enough lighting (49%), unfamiliar people around (46%) or no/not enough people around (43%), and suspicious activity observed (44%). While patterns in responses about reasons for feeling unsafe are largely similar across undergraduate students, graduate students, staff, and faculty, a larger share of undergraduate students – roughly six-in-ten – cited a lack of lighting (61%) and suspicious activity (58%) as reasons for feeling unsafe in the places they selected on the campus map.

Figure 3: Reasons for feeling unsafe in specific areas

Lack of lighting, unfamiliar people among top reasons for feeling unsafe



There are few notable gender differences in the reasons for feeling unsafe, though a larger share of respondents who identify as women selected not having enough people around as a reason (46%) than those who identified as men (33%). Among other minoritized gender identity groups, a larger share cited offensive behavior as a reason for feeling unsafe (36% compared with 14% each of those who identify as women or men).

Action:

Throughout the last year, OPS has been receiving feedback through other channels that students desire more lighting in certain parts of campus since they are the demographic most likely to be on campus at night. OPS has been working closely with UFS to reevaluate lighting needs across campus and identify areas for enhancements based on concerns raised. These survey results provide helpful data to support and inform these efforts and, when paired with the heat map in Figure 2, identify specific locations for potential lighting enhancements.

Additionally, in Spring 2024, Chief Safety Officer Steve Patterson led several nighttime “Safety Strolls with Steve” where he explored campus with students to learn about their lived experiences, identify areas where students felt less safe, and generate solutions aimed at improving feelings of safety. The insights gathered from these safety strolls align with many of the reasons identified within the survey responses for people feeling less safe.

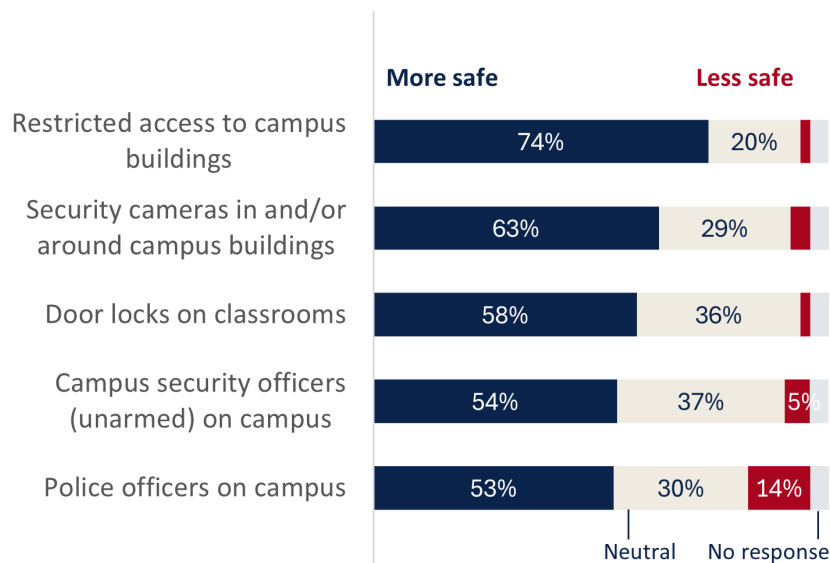
The U of A also encourages the university community to use the LiveSafe app. This app provides a direct connection to the [University of Arizona Police Department \(UAPD\)](#) and also includes other built-in safety features. For example, the SafeWalk feature allows users to walk across campus while their movement is being monitored by a friend. OPS encourages students to use SafeWalk when they are walking across campus at night or in a less populated area so that someone can keep track of their progress.

4. The majority of respondents are supportive of physical security upgrades.

Three quarters of respondents (74%) who report spending time on campus say restricted access to campus buildings makes them feel more safe. Roughly six-in-ten say the same about security cameras in and around campus buildings (63%) and door locks on classrooms (58%). About half of respondents say campus security officers and police officers on campus make them feel more safe (54% and 53%, respectively). Staff, in particular, say police officers on campus make them feel more safe (58%), compared with just under half of faculty (49%) and students (47%) who say this.

Figure 4: Support for physical security upgrades

Majority say variety of safety measures make them feel more safe



While there are few notable differences by race and ethnicity in this question set, respondents of color do stand out as somewhat more likely to say security cameras in and around campus buildings make them feel safer. About seven-in-ten American Indian or Alaska Native respondents (71%), Asian respondents (72%), Black or African American respondents (74%) and Hispanic or Latinx respondents (73%) say security cameras in or around campus buildings make them feel safer compared with 61% of white respondents.

Action:

As part of ongoing building security upgrades, additional buildings on campus are now equipped with CatCard access. Many buildings have restricted hours based on CatCard access, and some suites within buildings also have restricted access. Building access privileges are provisioned by building managers and designated departmental users. Additionally, in 2023 the system received a critical update so that UAPD can conduct a remote manual lockdown of all CatCard access points in the case of an emergency lockdown.

Also in 2023, OPS and UFS diligently worked to install locks on every classroom door on campus, along with posted instructions for how to operate the different locks. This was based on strong sentiments expressed by the university community related to door locks, and the survey results confirm majority support for this effort. Security cameras are also being installed on Emergency Blue Light Phones in more heavily trafficked areas. These survey findings will continue to influence physical security upgrades as OPS seeks to prioritize competing requests.

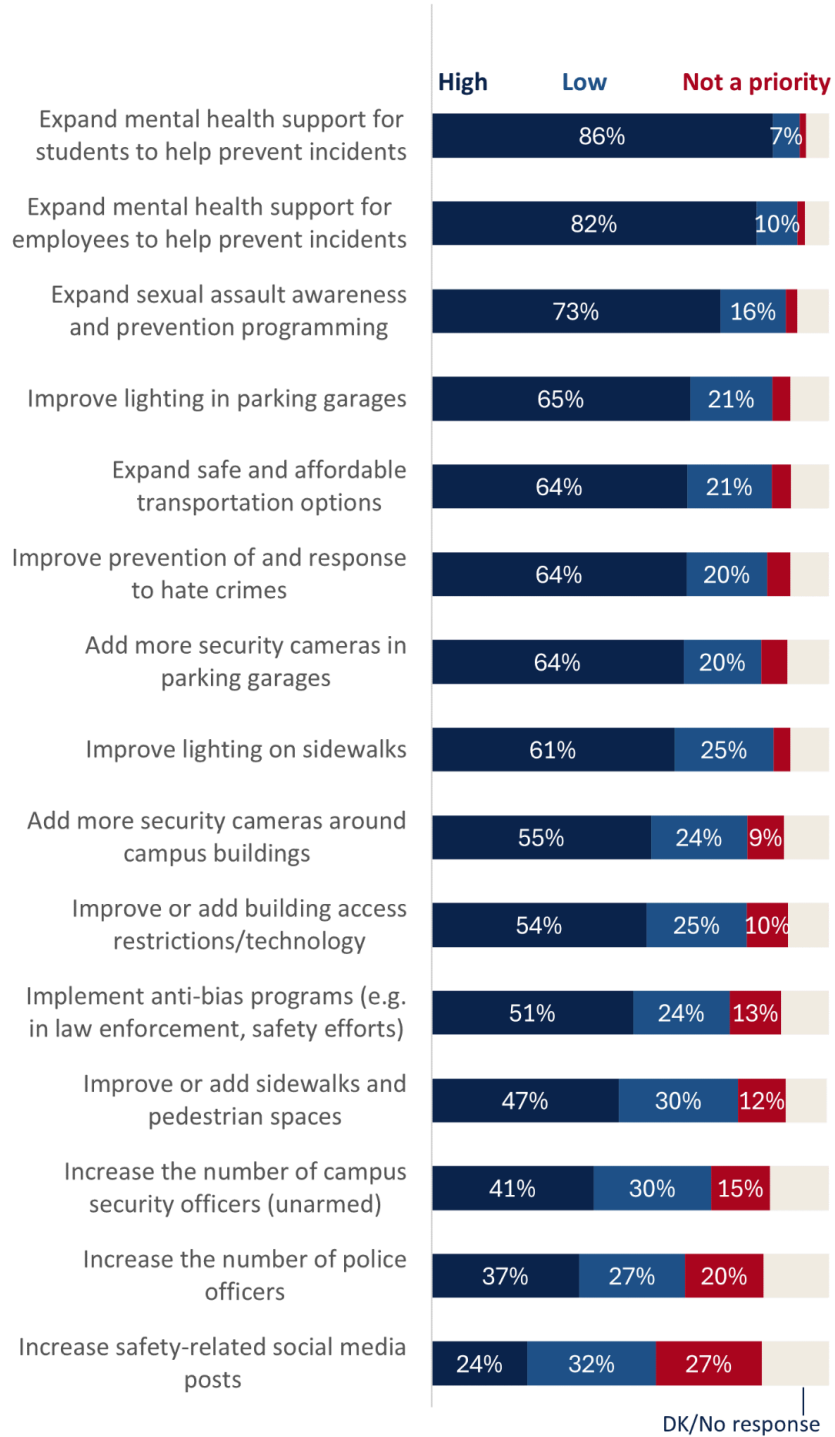
B. Safety Priorities and Programs

1. More than eight-in-ten say mental health support should be a high priority.

A large majority of respondents think expanding mental health support – for students (86%) and employees (82%) – to help prevent incidents should be a high safety priority in the near future. Nearly three quarters (73%) say expanding sexual assault awareness and prevention programming should be a high priority. Many would also like to see OPS prioritize enhancements to lighting and security cameras in parking garages (65% and 64%, respectively), the expansion of safe and affordable transportation options (64%), and improvements to prevention and response to hate crimes (64%).

Figure 5: Priorities for safety initiatives

More than eight-in-ten say mental health support should be a high priority.



Students are particularly supportive of expanding safe and affordable transportation options, with 78% of undergraduates and 75% of graduates saying this should be a high priority, compared with six-in-ten (60%) staff respondents and just over half (52%) of faculty.

While more than half of respondents (55%) would like to see an increase in security cameras around campus buildings, faculty respondents were somewhat less supportive of this as a priority than other respondents; 43% of faculty said more cameras around buildings should be a high priority for OPS in the near future compared with 54% of staff, 60% of graduate students, and 63% of undergrads.

Action:

The response options to this question included initiatives and priorities that OPS is currently pursuing or considering in the near future. OPS has developed strong partnerships with stakeholders across the campus to centralize and maximize the preventative and safety resources to serve the community. These data are being used to ensure that OPS initiatives are tightly aligned with community interest.

In particular, the prioritization by the majority of respondents of expanded support and awareness – for topics such as mental health and sexual assault – highlights the need for increased education and visibility of campus resources. Working alongside UAPD and **University Information Technology Services (UITS)**, OPS is improving efficiencies in emergency reporting of incidents through **UAlert** and **Clery Timely Warnings (CTW)**. This includes clarifying the language that is used for incidents and ensuring that university resources are provided to anyone who may be affected by the incident.

Counseling and Psych Services (CAPS) serves as a key member of the revitalized **Threat Assessment and Management Team (TAMT)**. The pairing has led to a correlation of resources and direction in initiatives like the co-responder program to maximize the reach and access to the mental health resources available. In Spring 2024, OPS introduced the Wildcats Roar Against Sexual Violence 5K & Resource Fair. This inaugural event will happen yearly to spread awareness and resources while raising funds for the Survivor Support Services through CAPS. This event is part of a greater **university wide sexual assault awareness campaign** that is centrally coordinated by the **Office of Institutional Equity**.

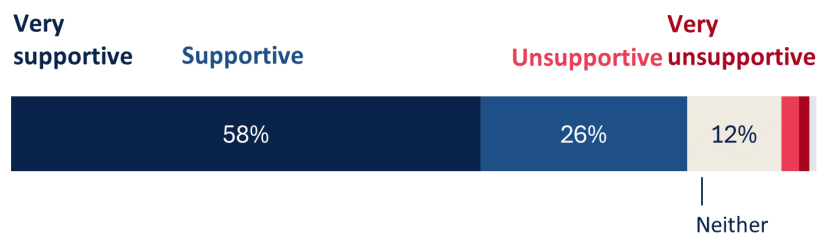
Additionally, the student-run **University Emergency Medical Services (UAEMS)** program has strengthened and expanded their partnerships with **Housing and Residential Life** and other campus entities. UAEMS is expanding training opportunities for life-saving equipment, which has been strategically located campus wide. These equipment offerings include Stop the Bleed kits, AEDs, and Narcan and are easily visible with updated signage.

2. The majority support a co-responder model for mental health crises.

The survey asked respondents to tell us what they think about potential new programs and collaborations. The results show a high level of support for collaboration between Campus Health’s Counseling and Psych Services (CAPS) and UAPD to co-respond to calls involving mental health crises on campus. 84% of respondents are either supportive or very supportive of this idea, and only four percent are unsupportive or very unsupportive.

Figure 6: Collaboration between CAPS and UAPD

High levels of support for co-responder model, dispatching CAPS and UAPD for mental health calls



Action:

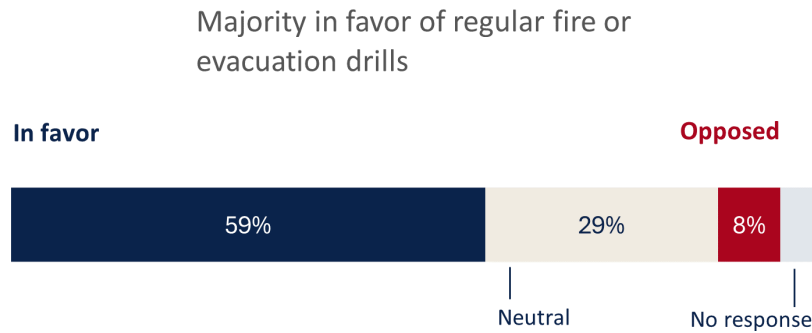
CAPS and UAPD have launched the first phase of this co-responder program that dispatches trained clinicians from CAPS alongside UAPD to incidents involving individuals that have mental health needs to engage the individual with the appropriate services. This co-responder approach will allow CAPS clinicians to act as the primary responders. The program is being developed based on input from the U of A community and with an eye to successful programs elsewhere. Knowing that respondents to this survey are supportive of this approach confirms that this program aligns with the interests of our community.

Additionally, in 2023 the University of Arizona Police Department (UAPD) added a new position to help address the increasing calls to the department involving mental health crises. The Mental Health Support Team (MHST) Officer helps further UAPD’s commitment to contribute to campus wellness and is part of a regional partnership with the Pima County Sheriff’s Department, Tucson Police Department, Oro Valley Police Department, and other local law enforcement agencies. The partnership allows for regular collaboration among MHST officers in the various departments to get more information when investigating individuals who may live in one jurisdiction but work or attend school in another.

3. About six-in-ten support regular fire or evacuation drills.

While the residence halls are required to perform regular fire drills per the state of Arizona fire code, other buildings on campus do not yet have this requirement. Only a small share of respondents said they would be opposed to having annual fire or evacuation drills in other buildings where they spend their time; most were either in favor of doing this (59%) or felt neutral about it (29%).

Figure 7: Implementing fire and evacuation drills



Action:

Drills were successfully conducted at all dorms in October 2023 will be completed again by October 2024. According to the state of Arizona fire code, drills are not required at other buildings but may be conducted upon request. Last November, OPS asked faculty and staff to contact a building manager if they would like to schedule a drill.

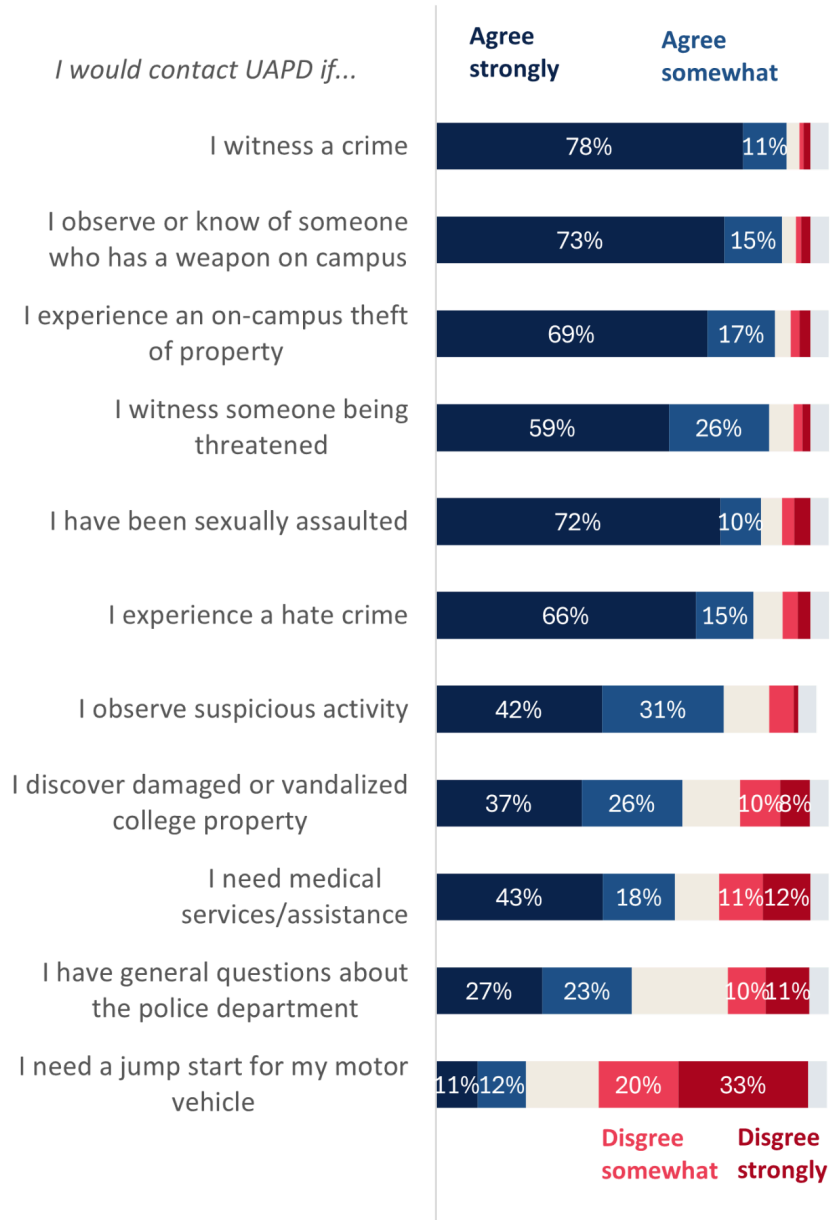
OPS is exploring additional training and preventative measures on campus to better prepare the university community for emergencies. Knowing that the survey responses indicate support for fire and evacuation drills, they can use this data to inform future planning for emergency responses.

4. The majority of respondents would contact UAPD in an emergency.

Respondents were asked whether they would contact UAPD in a variety of contexts. The majority said they would contact UAPD in situations such as witnessing a crime (89%), observing or knowing someone has a weapon on campus (88%), experiencing an on-campus theft of personal or college owned property (86%), witnessing someone being threatened (85%), being/been sexually assaulted (83%), experiencing a hate crime (81%), observing suspicious activity (73%), discovering damaged or vandalized college property (63%), or needing medical services (61%).

Figure 8: Contacting UAPD

Most would contact UAPD to report crime.



Student respondents are somewhat less likely than employees to say they would contact UAPD in several of these scenarios. While most, regardless of role, say they would contact UAPD to report being sexually assaulted, somewhat smaller shares of undergraduate (74%) and graduate student respondents (77%) agree they would do so than staff (86%) or faculty (87%) and a very similar pattern can be seen when it comes to reporting a hate crime (72% of undergraduates, 75% of graduate students, 84% of staff, and 88% of faculty). Additionally, only 40% of undergraduate respondents say they would

contact UAPD in the case of damaged or vandalized college property compared with 54% of graduate students, 70% of staff, and 74% of faculty. And while three quarters or more of staff (78%) and faculty (76%) would report suspicious activity to UAPD, roughly two-thirds of graduate students (66%) or undergraduate student respondents (63%) say they would do so.

While there are no notable differences in the ways respondents who identify as female and as male respond to questions about contacting UAPD, respondents who identify as nonbinary, genderqueer or gender fluid, transgender, agender, or questioning were often less likely to agree that they would contact UAPD in various scenarios. While most still agree that they would contact UAPD in the event of observing someone with a weapon on campus (76%), witnessing a crime (73%), theft of property (68%), or witnessing someone being threatened (65%), these shares are smaller than those of respondents who identify as female or male. About six-in-ten say they would report having experienced a hate crime (61%) or sexual assault (58%) compared with eight-in-ten or more of other respondents. And about half disagree that they would contact UAPD if they discover damaged property (51%) or if they observe suspicious activity (50%).

The survey also asked about the effectiveness of UAPD in areas such as preventing crime, listening to the needs of the community, and responding quickly to reports of crime. On balance, respondents are more positive than negative in their assessment of how UAPD is doing across areas. For example, 53% say UAPD is either extremely, very, or somewhat effective at treating their community with respect, while 12% say they are not too or not at all effective. Nonetheless, significant shares of respondents selected “I don’t know” across this question set; on seven out of eleven items, more than half of respondents said they do not know how effective UAPD is at the task. This may be the result of a lack of awareness, infrequent communication, lack of interactions with UAPD, or other factors.

Action:

UAPD strives to build strong relationships with every member of the university community. As the data shows, certain underrepresented groups are less likely to contact UAPD, particularly in instances where activity is not overtly violent in nature. While these results may reflect less awareness of the non-emergency services that UAPD provides, they also point to cultural and societal differences which UAPD should keep front of mind. Community education and trust building should remain top priorities for UAPD.

UAPD continually works to increase trust and transparency. The UAPD Community Academy, a 10-week course that dives into the department's operations, expertise, mission and service, launched in the spring of 2024. The academy is an ongoing opportunity for the department to share about the department's operations while also hearing people's thoughts, feelings, and concerns related to public safety.

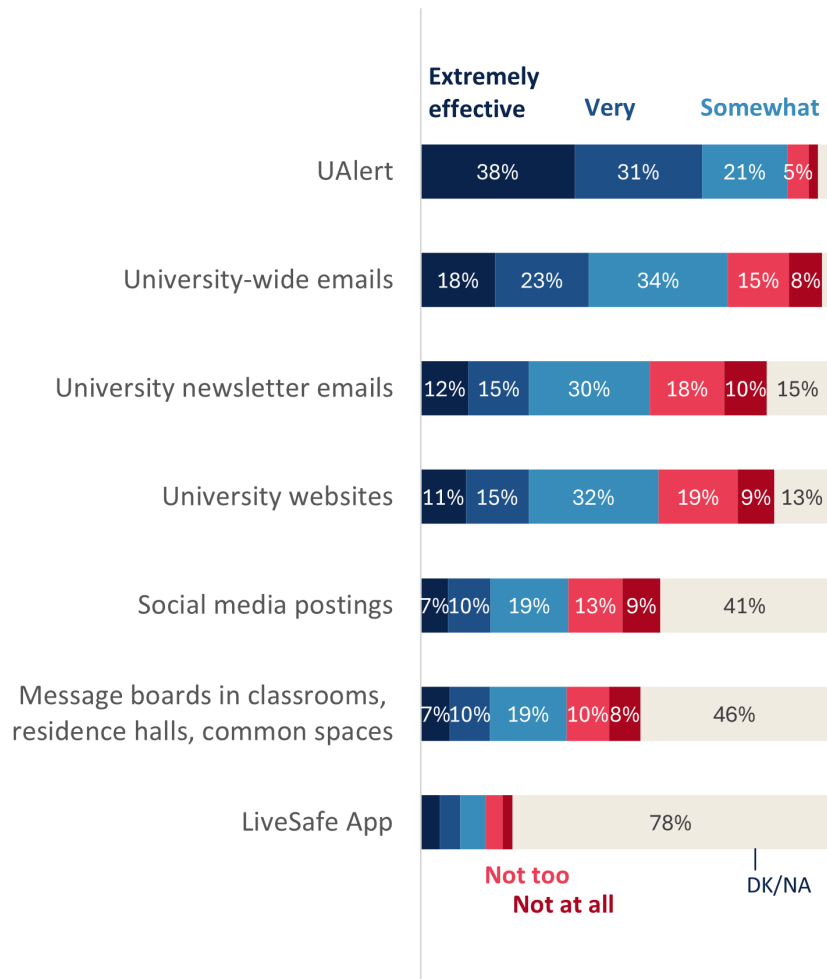
C. Safety Communication

1. Three-quarters say emergency information is readily available.

When asked whether or not the information that the University provides in an emergency is readily available, 74% of respondents either strongly agree or somewhat agree. The University utilizes many channels of communication in an emergency, and the survey identified certain vehicles that are seen as effective (UAlert at 90% effective and university-wide emails at 75% effective) and others that are less well-known (78% were unfamiliar with or had not used the LiveSafe app).

Figure 9: Sources of Safety Communication

Nine-in-ten say UAlert is effective; most are unfamiliar with LiveSafe App.



Action:

The university has worked intently over the last two years to increase safety messaging based on feedback from the university community and will continue to do so. OPS is constantly evaluating the efficacy of its many methods of communication. The results from this survey have identified channels where communication is well-received by the university community and mediums that could benefit from more exposure.

For example, as a result of this survey, OPS has been working to increase awareness of the LiveSafe app through various communications. OPS is currently evaluating the UAlert notification system and exploring the possibility of integrating UAlert and the functions of the LiveSafe app through a single vendor solution. This could not only raise the awareness of safety features within the safety app by tying it to emergency alerts, but could simplify crisis communication management during an emergency. Better synchronization of these communication channels ultimately is intended to increase the availability of critical information in case of emergency.

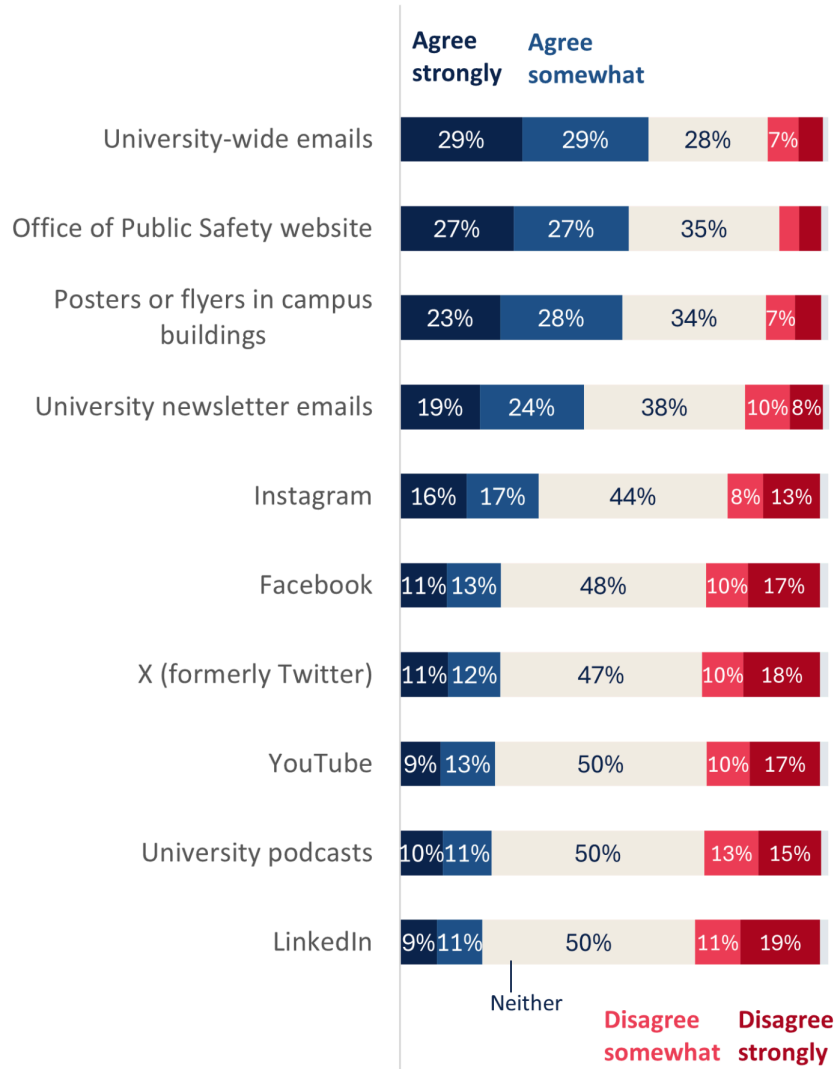
These results also provide the opportunity for additional education to the campus community. The University of Arizona's [interactive map](#) contains filters to view Emergency Blue Light Phones, Stop the Bleed kits, AED devices, and other health and safety features. Members of our community may be unaware of the ease of access for locating these safety tools, and this could be a good opportunity for targeted outreach.

2. Many respondents want more safety-related content through key channels.

The majority of respondents said they want to see more safety-related content from university-wide emails (58%), the OPS website (53%), and posters or flyers in campus buildings (52%).

Figure 10: Interest in Additional Safety-Related Content

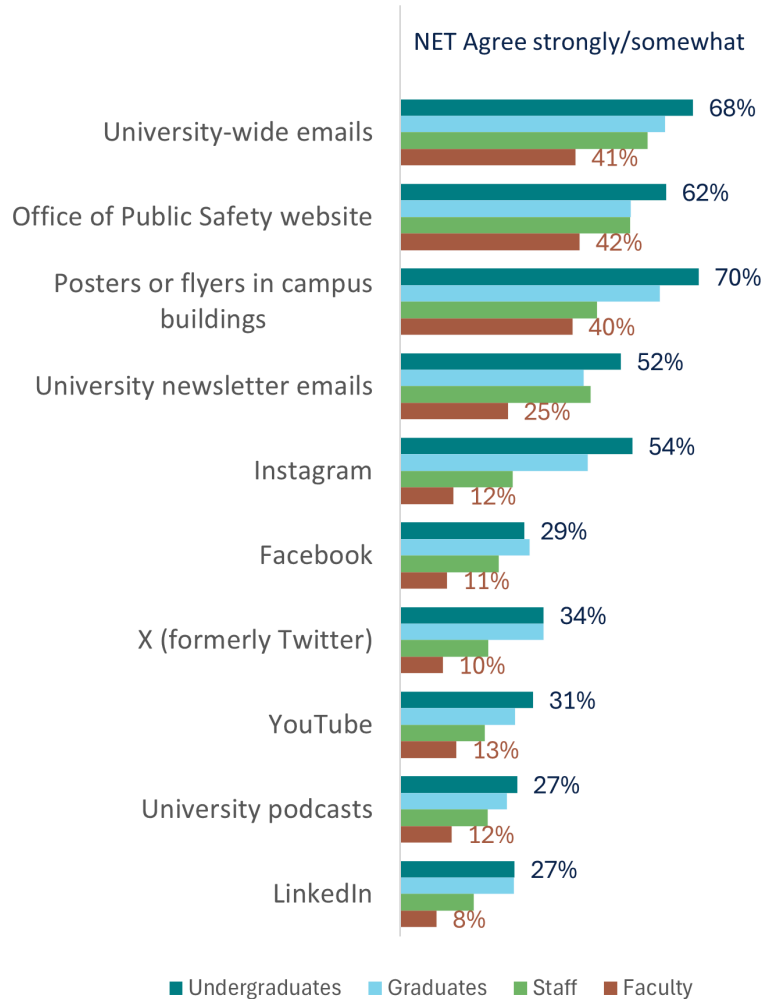
Half or more would like to see more safety related content via emails, website, and posters.



Students are generally more likely than employees – especially faculty – to say they would like to see more safety-related content from each of the communication methods asked about. Upwards of two-thirds of undergraduate student respondents agree strongly or agree somewhat that they would like to see more safety content in posters or flyers on campus (70%) and in university-wide emails (68%), and just over half (54%) are interested in seeing more safety content in Instagram posts.

Figure 11: Interest in More Safety Content by Role

Students more interested than faculty in additional safety-related content.



Action:

Created in May 2023, OPS brings a unique ability to coordinate various departments in crafting cohesive messaging related to safety. Knowing that respondents want more emails, website content, and posters to get their safety-related information helps focus communication improvement efforts. OPS continues to insert safety information into university wide emails and is focusing on updating the OPS website to include web articles which highlight safety information. OPS has also developed an updated Crisis Response Plan for the university which will govern how information is crafted, vetted, and distributed in a timely manner in the event of a crisis.

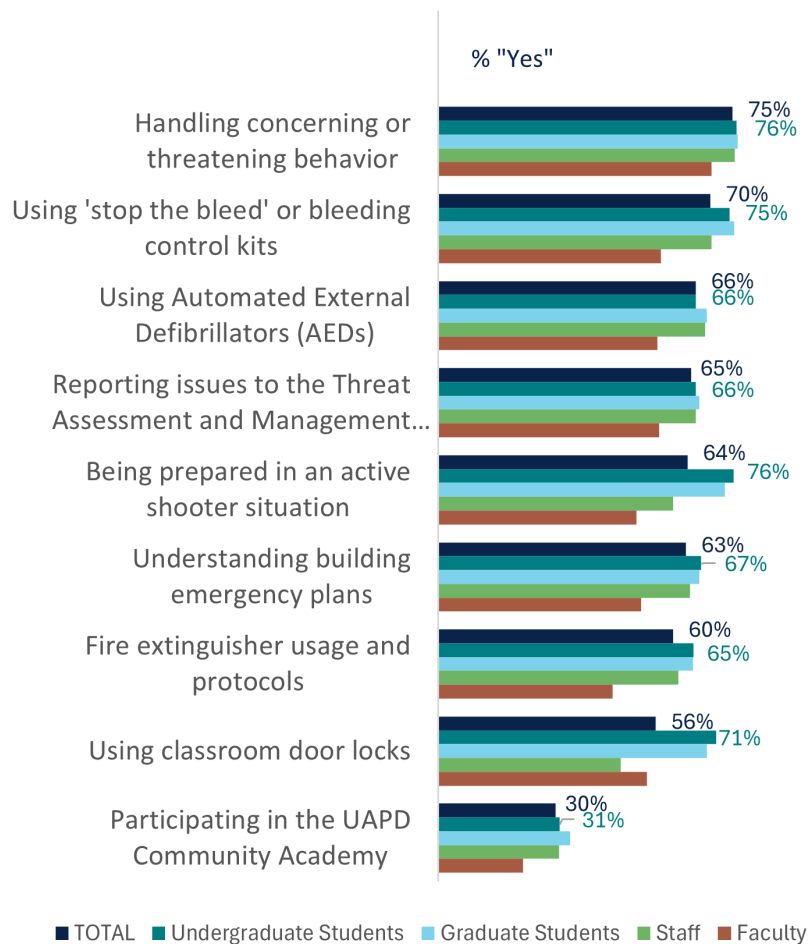
Many members of the university community are on computers regularly utilizing email and the internet. At the same time, finding ways to communicate effectively with individuals who do not have frequent access to a computer is critical to ensure no subset of the population goes without critical safety information. As demonstrated by this response data, printed media continues to be an effective form of communication in many cases.

3. Interest in additional training is broad, particularly among students.

Three-quarters of all respondents expressed interest in further training around handling concerning or threatening behaviors. Additionally, about three-quarters of undergraduate students also showed interest in educational opportunities for being prepared in an active shooter situation (76%), using Stop the Bleed or bleeding control kits (75%), and using classroom door locks (71%).

Figure 12: Interest in Safety Training by Role

Students particularly interested in additional trainings about safety topics.



Today's college students have largely grown up in a time when fire and active shooter drills are a regular feature of K-12 education. These survey results indicate there may be a continued expectation of, or at least openness to, further training once students arrive on the university campus.

Action:

OPS is actively building capacity for training on various topics. In 2023, a new **Safety Preparedness Active Shooter Training** launched through the university's online learning management system and became required for all employees on an annual basis. Anyone with a university login can complete the training at any time, and the content also is available for public viewing on the UAPD website.

Additionally, OPS knows that reporting concerning behaviors is essential to preventing violence. OPS has used insights gleaned from the campus community about the process for reporting concerning or otherwise threatening behavior as an opportunity to improve outreach and the overall safety of our community. During the 2024-25 academic year, the Threat Assessment and Management Team (TAMT) is debuting two web-based trainings on the university's online learning management system. The first training helps students, faculty, and staff understand targeted violence, identify warning behaviors of targeted violence, and learn about the ways in which the TAMT can help prevent and mitigate violence risk. The second training focuses on conflict resolution and de-escalation skills to help faculty, staff, and student workers gain tools to address difficult interpersonal situations.

III. Looking Forward

The University Safety Survey was crafted to produce actionable results that would directly influence the direction, priorities, and investments of the university related to improving safety and security. OPS is committed to collecting feedback and basing their initiatives on the priorities of the university community. In several instances, the results of this survey confirm initiatives that are already underway. The data has also identified additional areas of focus and helped prioritize future actions.

Understanding perceptions of safety on campus is essential to understanding the root of concerns and improving available resources. This survey is one of many tools which can be used to hear from the campus community. In addition, the university has created the Campus Safety Commission composed of students, faculty, staff, and community members to advise the university's Chief Safety Officer on matters related to the development, implementation, and evaluation of safety policies and practices. All community members are encouraged to raise questions or suggestions with this group. In addition, OPS will be reaching out to those who indicated on the survey that they would

be willing to be part of a focus group in order to gain better insight and understanding of these results and meaningful actions the university can take moving forward.

The safety survey is intended to be administered on a regular basis. This instrument can be used to show changes in community sentiment over time as well as adapt to gather data around new technologies and innovations.

OPS always welcomes feedback via publicsafety@arizona.edu.

IV. Appendix A: Survey Methodology

The 2024 University Safety Survey was developed and administered in Spring 2024 by the Office of Public Safety (OPS) and University Initiatives & Policy (UIP). University of Arizona students, employees, and Designated Campus Colleagues (DCCs) were invited to participate. The survey was open in Qualtrics from March 27 – April 15, 2024, and yielded 3,076 responses.

Questionnaire Development

The questionnaire was developed collaboratively by members of OPS and UIP, with input from numerous university partners and stakeholder groups. Several survey questions were inspired by previous safety-related surveys – for example, the 2009 Campus Safety Survey administered to University of Arizona students by the Dean of Students Office, and a national campus safety survey developed by Inside Higher Ed – and adapted to the current University of Arizona context. Questionnaire development was driven by OPS campus safety goals and initiatives with the intention of collecting actionable information from the university community. Survey pretests were conducted with more than 40 volunteer respondents, including students, staff, and faculty, and the questionnaire was refined based on pretest feedback.

Survey Administration

The survey was administered online via Qualtrics. An email invitation was sent to all University of Arizona students, employees, and DCCs on March 27, 2024. The survey link was also shared via a variety of other communication channels, including newsletters, social media, QR codes posted at campus gatherings, and a reminder email to those who had not yet participated by April 11. The survey closed on April 15, 2024.

Survey Response

The survey yielded 3,076 responses that were included in the analysis. This includes 2,963 (96%) respondents who completed the full survey and 113 (4%) who completed at least two-thirds of the questionnaire. Table 1 shows the breakdown of respondents by self-reported primary role at the university. While DCCs were eligible to participate, only 56 completed the survey out of roughly 16,000 eligible. The respondent population, then, is largely comprised of students, faculty and staff.

3,019 respondents identified their primary role as being either student, faculty, or staff (including postdocs) or some combination (many of the “other” responses indicated “staff and graduate student” or a similar combination of roles). Compared to the total of 67,101 people in these roles at the time of the **Fall 2023 census**, this resulted in a response rate of about 4.5%.

Table 1: University Safety Survey Respondents by Role

	Count	% of Respondents
Undergraduate Student	623	20.3
Graduate Student	414	13.5
Staff	1,498	48.7
Faculty	442	14.4
Postdoc	27	0.9
Designated Campus Colleague (DCC)	56	1.8
Other (please specify)	15	0.5
No response	1	<u>0.0</u>
Total Respondents	3,076	100

Table 2 shows the respondents by role, with comparisons to the university population. Tables 3-6 show a respondent profile for each of the 4 major subcategories of respondents: undergraduate students, graduate students, staff, and faculty. Generally, students are underrepresented among the respondents, and women and white respondents are overrepresented compared to the overall population. While the use of weights (to more closely represent the population parameters) was explored, the decision was made to report unweighted results. Results weighted by role, sex, and race/ethnicity, while yielding slightly different point estimates, nonetheless showed the same overall patterns and differences by subgroups of interest. The results in this report are unweighted and readers should note that results are representative only of respondents and not the full university population. Throughout the report, differences by role and key demographic characteristics are highlighted where substantive differences have been identified.

Table 2: University Safety Survey Respondents Compared with University of Arizona Population

	Survey Respondents		University Population	
	Count	Percent	Count	Percent
Undergraduate Student	623	20.3	42,075	62.7
Graduate Student	414	13.5	11,112	16.6
Staff*	1,525	49.6	10,529	15.7
Faculty	442	14.4	3,385	5.0
DCC/Other/No response	<u>72</u>	<u>2.3</u>	<u>n/a</u>	<u>n/a</u>
	3,076	100	67,101	100

*Staff category includes postdocs. University population counts from Fall 2023 Census.

Table 3: University Safety Survey Respondent Profile, Undergraduate Students

	Survey Respondents		University Population	
	Count	Percent	Count	Percent
Undergraduate Students				
Sex				
Female	435	69.8	23,309	55.4
Male	184	29.5	18,765	44.6
Not reported/missing	<u>4</u>	<u>0.6</u>	<u>1</u>	<u>0</u>
	623	100	42,075	100
IPEDS Race/Ethnicity				
American Indian or Alaska Native	10	1.6	619	1.5
Asian	30	4.8	2,074	4.9
Black or African American	15	2.4	1,776	4.2
Hispanic or Latinx	152	24.4	11,399	27.1
International	31	5	1,906	4.5
Native Hawaiian or Pacific Islander	2	0.3	93	0.2
Not reported/missing	9	1.4	2,559	6.1
Two or more races	26	4.2	2,062	4.9
White	<u>348</u>	<u>55.9</u>	<u>19,587</u>	<u>46.6</u>
	623	100	42,075	100
Full-time/Part-time				
Full time	564	90.5	32,801	78
Part time	49	7.9	9,274	22
Missing	<u>10</u>	<u>1.6</u>	<u>0</u>	<u>0</u>
	623	100	42,075	100
First Generation Status				
Yes	180	28.9	13,188	31.3
No/not selected	<u>443</u>	<u>71.1</u>	<u>28,887</u>	<u>68.7</u>
	623	100	42,075	100
Academic Level				
First year	115	18.5	13,546	32.2
Sophomore	128	20.6	8,600	20.4
Junior	141	22.7	9,025	21.4
Senior	<u>238</u>	<u>38.3</u>	<u>10,904</u>	<u>25.9</u>
	622	100	42,075	100
Residency				
Arizona resident	402	64.6	21,134	50.2
Nonresident	192	30.9	19,035	45.2
International	<u>28</u>	<u>4.5</u>	<u>1,906</u>	<u>4.5</u>
	622	100	42,075	100

Figures derived from institutional data. University-level comparisons based on Fall 2023 Census.

Table 4: University Safety Survey Respondent Profile, Graduate Students

	Survey Respondents		University Population	
	Count	Percent	Count	Percent
Graduate Students				
Sex				
Female	291	70.3	6,069	54.6
Male	122	29.5	5,011	45.1
Not reported/missing	<u>1</u>	<u>0.2</u>	<u>32</u>	<u>0.3</u>
	414	100	11,112	100
IPEDS Race/Ethnicity				
American Indian or Alaska Native	7	1.7	195	1.8
Asian	18	4.3	770	6.9
Black or African American	7	1.7	402	3.6
Hispanic or Latinx	77	18.6	2,039	18.3
International	102	24.6	1,743	15.7
Native Hawaiian or Pacific Islander	0	0	18	0.2
Not reported/missing	14	3.4	992	8.9
Two or more races	13	3.1	420	3.8
White	<u>176</u>	<u>42.5</u>	<u>4,533</u>	<u>40.8</u>
	414	100	11,112	100
Residency				
Arizona resident	185	44.7	4,847	43.6
Nonresident	126	30.4	4,522	40.7
International	101	24.4	1,743	15.7
Missing	<u>2</u>	<u>0.5</u>	<u>0</u>	<u>0</u>
	414	100	11,112	100

Figures derived from institutional data. University-level comparisons based on Fall 2023 Census.

Table 5: University Safety Survey Respondent Profile, Staff

	Survey Respondents		University Population	
	Count	Percent	Count	Percent
Staff				
Sex				
Female	1,086	71.2	6,328	60.1
Male	437	28.7	4,201	39.9
Not reported/missing	<u>2</u>	<u>0.1</u>	<u>0</u>	<u>0</u>
	1,525	100	10,529	100
IPEDS Race/Ethnicity				
American Indian or Alaska Native	15	1	158	1.5
Asian	39	2.6	442	4.2
Black or African American	36	2.4	305	2.9
Hispanic or Latinx	358	23.5	3,222	30.6
International	37	2.4	453	4.3
Native Hawaiian or Pacific Islander	1	0.1	21	0.2
Not reported/missing	39	2.6	316	3
Two or more races	45	3	253	2.4
White	<u>955</u>	<u>62.6</u>	<u>5,359</u>	<u>50.9</u>
	1,525	100	10,529	100
Full-time/Part-time				
Full time	1,414	92.7	9,416	89.4
Part time	96	6.3	1,113	10.6
Missing	<u>15</u>	<u>0.1</u>	<u>0</u>	<u>0</u>
	1,525	100	10,529	100

Figures derived from institutional data. University-level comparisons based on Fall 2023 Census.

Table 6: University Safety Survey Respondent Profile, Faculty

	Survey Respondents		University Population	
	Count	Percent	Count	Percent
Faculty				
Sex				
Female	210	47.5	1,557	46
Male	232	52.5	1,828	54
Not reported/missing	<u>0</u>	<u>0</u>	<u>0</u>	<u>0</u>
	442	100	3,385	100
IPEDS Race/Ethnicity				
American Indian or Alaska Native	2	0.5	27	0.8
Asian	20	4.5	349	10.3
Black or African American	11	2.5	71	2.1
Hispanic or Latinx	50	11.3	345	10.2
International	5	1.1	139	4.1
Native Hawaiian or Pacific Islander	0	0	0	0
Not reported/missing	27	6.1	186	5.5
Two or more races	5	1.1	44	1.3
White	<u>322</u>	<u>72.9</u>	<u>2,224</u>	<u>65.7</u>
	442	100	3,385	100
Faculty Track				
Tenured	155	35.1	1,204	35.6
Tenure Eligible	30	6.8	338	10
Continuing Status	22	5	n/a	n/a
Continuing Status Eligible	6	1.4	n/a	n/a
Career Track	115	26	1,262	37.3
Adjunct/NT	35	7.9	577	17
Other faculty*	<u>79</u>	<u>17.9</u>	<u>4</u>	<u>0.1</u>
	442	100	3,385	100

Figures derived from institutional data. University-level comparisons based on Fall 2023 Census. **“Other faculty” category includes contract types of Fiscal Year, NE, Year to Year, and Undefined, and for the university-level comparison may include a handful of Continuing Status or Continuing Eligible classified faculty. The faculty category in the analysis of survey respondents is based on self-identified primary role, which may not be the same way an individual is categorized in the Interactive Fact Book.

Survey Limitations

Survey limitations that should be considered when interpreting the results include the relatively low response rate overall and the disparate response rates by role. While approximately 4.5% of all students, staff, and faculty participated in the survey, the response rate among undergraduate students is approximately 1.5% (based on the number of undergraduate students **enrolled as of the Fall 2023 census**). The response rate among graduate students is approximately 3.7%, while about 14.5% of staff and 13.1% of faculty participated in the survey (based on **Fall 2023 workforce census counts**). For results reported for respondents overall, undergraduate and graduate students are underrepresented compared with staff and faculty. Where there are large differences in responses by role, these differences are described throughout the report.

Additionally, women are overrepresented among student and staff respondents, and white respondents are somewhat overrepresented among undergraduates, staff, and faculty. Differences in responses by gender identity and racial & ethnic identity are highlighted in the report text where relevant.

As described in the Survey Response section above, results of the survey represent the survey respondents and should not be described as representative of the university community as a whole. Nonetheless, the results are informative of what many in the university community are experiencing, and differences by subgroups (e.g. students compared with employees) are indicative of real differences in experience across campus. The survey provides important baseline information to build upon, and future iterations of the survey will include efforts to improve response rates, particularly among the student population.

V. Appendix B: Survey Results by Question

What is your primary role at the University of Arizona?

	TOTAL
Undergraduate Student	20.3
Graduate Student	13.5
Staff	48.7
Faculty	14.4
Postdoc	0.9
Designated Campus Colleague (DCC)	1.8
Other (please specify)	0.5
No response	<u>0.0</u>
Total	100
N	3,076

NOTE: Postdoc category combined with Staff throughout remaining results.

How often do you spend time on the University of Arizona Main Campus (including the University of Arizona Health Sciences)?

	TOTAL	Undergraduate Students	Graduate Students	Staff	Faculty
Nearly every day	65.3	85.6	63.0	59.9	62.2
At least once a week	16.5	7.5	20.0	17.4	21.5
Once or twice a month	4.9	0.8	6.8	6.5	2.3
A few times a year	4.9	0.6	2.9	6.0	8.1
Seldom	3.9	1.0	3.1	5.8	2.0
Never	4.4	4.5	4.1	4.3	3.8
No response	<u>0.0</u>	<u>0</u>	<u>0</u>	<u>0.1</u>	<u>0</u>
Total	100	100	100	100	100
N	3,076	623	414	1,525	442

Is there a specific place or places on or near the University of Arizona Main Campus where you do NOT feel safe?

Asked of those who say they spend time on Main Campus (including UAHS) at least a few times a year.

	TOTAL	Undergraduate Students	Graduate Students	Staff	Faculty
Yes	41.0	58.9	54.4	32.4	32.5
No	58.8	41.1	45.6	67.4	67.3
No response	<u>0.2</u>	<u>0</u>	<u>0</u>	<u>0.2</u>	<u>0.2</u>
Total	100	100	100	100	100
N	2,820	589	384	1370	416

Click on the map below to indicate the ONE place on campus where you feel the least safe. If necessary, zoom in to see more detail.

We acknowledge that there may be more than one place on campus where you do not feel safe. The purpose of this survey question is to identify, in the aggregate (using all responses), some top areas of concern for the University of Arizona community. If you would like to talk to someone from the Office of Public Safety about additional areas of concern for you personally, please reach out to publicsafety@arizona.edu.

Asked of those who say there is a place or places on campus where they do not feel safe.

[CAMPUS MAP IMAGE]

Thinking of the place [you selected on the map/you just described], do you feel unsafe there...

Asked of those who say there is a place or places on campus where they do not feel safe.

	TOTAL	Undergraduate Students	Graduate Students	Staff	Faculty
During the day (when it is light out)	6.1	3.2	4.3	7.7	12.6
At night (when it is dark out)	51.9	57.9	59.8	45.7	45.9
Both	41.9	38.9	35.9	46.4	41.5
No response	<u>0.1</u>	<u>0</u>	<u>0</u>	<u>0.2</u>	<u>0</u>
Total	100	100	100	100	100
N	1,157	347	209	444	135

Thinking of the place [you selected on the map/you just described], please indicate which, if any, of the following are reasons you feel unsafe there. Select as many as apply.

Asked of those who say there is a place or places on campus where they do not feel safe.

	TOTAL	Undergraduate Students	Graduate Students	Staff	Faculty
<i>Percent selected</i>					
Not enough lighting	49.0	61.1	52.2	43.5	33.3
Unfamiliar people around	46.1	52.4	44.5	43.0	40.0
No people/not enough people around	42.8	45.8	42.6	41.2	41.5
Criminal activity observed	28.1	34.3	29.2	25.7	17.8
Suspicious activity observed	44.3	57.9	38.3	39.9	34.1
High vehicle traffic	24.2	27.4	22.5	23.2	19.3
Offensive behavior	15.5	15.9	15.8	15.5	14.1
Not enough police presence	33.4	37.2	31.6	32.2	30.4
Too much police presence	2.2	1.4	3.8	2.5	1.5
Other	22.0	14.1	19.1	26.4	34.1
N	1,157	347	209	444	135

Please indicate your level of satisfaction with the following resources, services and programs on campus.

Blue light emergency phones

Asked of those who say they spend time on Main Campus (including UAHS) more than never.

	TOTAL	Undergraduate Students	Graduate Students	Staff	Faculty
Very satisfied	16.9	14.3	16.4	18.5	15.1
Somewhat satisfied	16.3	21.0	16.1	15.6	12.9
Neither satisfied nor dissatisfied	12.8	17.0	11.1	12.0	10.4
Somewhat dissatisfied	4.1	7.9	4.8	2.8	2.8
Very dissatisfied	2.3	2.7	3.5	1.6	2.8
I don't know/ I am not familiar with this	3.9	2.5	7.1	3.4	4.5
Not applicable/ I have not used this	43.3	34.1	40.8	45.5	51.1
No response	<u>0.5</u>	<u>0.5</u>	<u>0.3</u>	<u>0.5</u>	<u>0.5</u>
Total	100	100	100	100	100
N	2,941	595	397	1,458	425

V. Appendix B: Survey Results by Question, Cont.

ASUA SafeRide					
<i>Asked of those who say they spend time on Main Campus (including UAHS) more than never.</i>					
	TOTAL	Undergraduate Students	Graduate Students	Staff	Faculty
Very satisfied	11.8	18.7	13.1	10.4	6.4
Somewhat satisfied	8.2	15.5	10.3	5.7	5.2
Neither satisfied nor dissatisfied	10.1	13.3	10.3	9.8	6.4
Somewhat dissatisfied	1.7	4.2	2.8	0.8	0.5
Very dissatisfied	1.6	2.5	3.3	1.2	0.5
I don't know/ I am not familiar with this	7.0	6.2	9.3	6.8	6.4
Not applicable/ I have not used this	58.9	39.0	50.6	64.5	73.6
No response	<u>0.8</u>	<u>0.7</u>	<u>0.3</u>	<u>0.8</u>	<u>1.2</u>
Total	100	100	100	100	100
N	2,941	595	397	1,458	425

University of Arizona Police Department (UAPD)					
<i>Asked of those who say they spend time on Main Campus (including UAHS) more than never.</i>					
	TOTAL	Undergraduate Students	Graduate Students	Staff	Faculty
Very satisfied	24.0	14.6	14.6	30.9	22.6
Somewhat satisfied	22.0	23.4	16.9	23.3	21.6
Neither satisfied nor dissatisfied	16.6	18.2	17.4	15.0	18.6
Somewhat dissatisfied	8.1	12.1	8.8	6.5	7.3
Very dissatisfied	7.7	14.3	11.3	4.9	5.4
I don't know/ I am not familiar with this	2.7	2.4	5.8	2.0	2.4
Not applicable/ I have not used this	18.5	14.6	24.9	16.9	21.6
No response	<u>0.5</u>	<u>0.5</u>	<u>0.3</u>	<u>0.5</u>	<u>0.5</u>
Total	100	100	100	100	100
N	2,941	595	397	1,458	425

V. Appendix B: Survey Results by Question, Cont.

Security at campus events

Asked of those who say they spend time on Main Campus (including UAHS) more than never.

	TOTAL	Undergraduate Students	Graduate Students	Staff	Faculty
Very satisfied	22.4	18.2	14.1	27.0	20.2
Somewhat satisfied	22.8	27.4	22.2	21.9	20.5
Neither satisfied nor dissatisfied	17.3	21.2	15.4	17.7	13.4
Somewhat dissatisfied	5.4	8.9	5.8	4.2	4.7
Very dissatisfied	3.3	4.4	5.8	2.3	3.3
I don't know/ I am not familiar with this	8.3	7.6	12.8	6.4	11.1
Not applicable/ I have not used this	20.1	12.3	23.7	20.2	25.9
No response	<u>0.4</u>	<u>0.2</u>	<u>0.3</u>	<u>0.3</u>	<u>0.9</u>
Total	100	100	100	100	100
N	2,941	595	397	1,458	425

Information provided by the University about being prepared in an emergency is readily available to me.

	TOTAL	Undergraduate Students	Graduate Students	Staff	Faculty
Agree strongly	32.0	22.3	20.5	38.4	33.0
Agree somewhat	42.0	43.3	43.7	41.5	41.4
Neither agree nor disagree	13.1	13.6	16.9	11.7	13.6
Disagree somewhat	8.9	13.3	12.3	6.0	9.7
Disagree strongly	3.9	7.4	6.3	2.4	2.3
No response	<u>0.1</u>	<u>0</u>	<u>0.2</u>	<u>0.1</u>	<u>0</u>
Total	100	100	100	100	100
N	3076	623	414	1525	442

How effective do you find each of the following sources of communication about safety at the University of Arizona?

UAlert

	TOTAL	Undergraduate Students	Graduate Students	Staff	Faculty
Extremely effective	37.7	36.6	30.2	40.5	37.3
Very effective	31.3	26.0	30.4	33.4	32.4
Somewhat effective	20.8	23.9	23.7	19.0	21.0
Not too effective	5.2	7.5	9.2	3.4	4.5
Not at all effective	2.3	4.2	3.4	1.5	1.8
I don't know/I am not familiar with this	0.4	0.8	0.5	0.2	0
Not applicable/I have not used this	2.0	1.0	1.9	1.8	2.9
No response	<u>0.2</u>	<u>0</u>	<u>0.7</u>	<u>0.2</u>	<u>0</u>
Total	100	100	100	100	100
N	3076	623	414	1525	442

LifeSafe App

	TOTAL	Undergraduate Students	Graduate Students	Staff	Faculty
Extremely effective	4.7	5.9	5.8	4.7	1.8
Very effective	4.9	5.6	4.8	5.4	2.7
Somewhat effective	6.3	8.0	6.5	5.8	6.1
Not too effective	4.1	5.5	4.3	3.9	2.9
Not at all effective	2.5	5.5	2.2	1.4	2.0
I don't know/I am not familiar with this	23.7	29.7	30.0	20.6	20.1
Not applicable/I have not used this	53.4	39.8	45.4	57.7	64.3
No response	<u>0.4</u>	<u>0</u>	<u>1.0</u>	<u>0.6</u>	<u>0</u>
Total	100	100	100	100	100
N	3076	623	414	1525	442

V. Appendix B: Survey Results by Question, Cont.

University-wide emails (e.g. from the President's Office, the Office of Public Safety)

	TOTAL	Undergraduate Students	Graduate Students	Staff	Faculty
Extremely effective	18.2	16.1	14.7	20.3	16.3
Very effective	23.0	17.5	21.7	26.6	19.0
Somewhat effective	34.0	32.1	29.5	35.7	35.3
Not too effective	15.0	18.6	18.6	11.9	18.3
Not at all effective	8.2	13.6	13.0	4.3	9.3
I don't know/I am not familiar with this	0.5	0.6	0.2	0.5	0.9
Not applicable/I have not used this	0.9	1.3	1.4	0.5	0.9
No response	<u>0.3</u>	<u>0.2</u>	<u>0.7</u>	<u>0.3</u>	<u>0</u>
Total	100	100	100	100	100
N	3076	623	414	1525	442

University newsletter emails (e.g. Bear Down Rundown, Lo Que Pasa)

	TOTAL	Undergraduate Students	Graduate Students	Staff	Faculty
Extremely effective	11.7	12.0	10.6	13.2	6.8
Very effective	14.8	12.0	10.1	18.6	10.4
Somewhat effective	29.6	26.8	24.2	33.4	26.5
Not too effective	18.3	20.2	16.2	18.0	19.7
Not at all effective	10.4	14.6	13.5	6.8	14.7
I don't know/I am not familiar with this	5.0	6.6	8.0	3.1	5.9
Not applicable/I have not used this	9.7	7.4	16.4	6.6	16.1
No response	<u>0.4</u>	<u>0.3</u>	<u>1.0</u>	<u>0.5</u>	<u>0</u>
Total	100	100	100	100	100
N	3076	623	414	1525	442

V. Appendix B: Survey Results by Question, Cont.

University websites	TOTAL	Undergraduate Students	Graduate Students	Staff	Faculty
	Extremely effective	11.0	9.8	9.7	12.5
Very effective	15.4	12.7	10.9	18.8	11.5
Somewhat effective	31.9	26.6	26.1	35.5	33.5
Not too effective	19.3	23.3	19.8	17.5	20.6
Not at all effective	9.1	14.3	13.8	5.0	11.8
I don't know/I am not familiar with this	3.4	4.7	3.9	2.7	2.9
Not applicable/I have not used this	9.6	8.5	15.0	7.5	12.0
No response	<u>0.4</u>	<u>0.2</u>	<u>1.0</u>	<u>0.4</u>	<u>0</u>
Total	100	100	100	100	100
N	3076	623	414	1525	442

Social media postings	TOTAL	Undergraduate Students	Graduate Students	Staff	Faculty
	Extremely effective	6.6	9.0	6.3	6.6
Very effective	10.4	13.8	10.9	10.9	4.1
Somewhat effective	19.1	21.3	17.1	20.4	13.6
Not too effective	13.3	16.2	15.9	11.7	12.4
Not at all effective	9.3	13.5	11.8	6.2	12.2
I don't know/I am not familiar with this	6.4	7.1	5.8	5.8	7.9
Not applicable/I have not used this	34.6	18.9	31.2	37.9	46.8
No response	<u>0.5</u>	<u>0.2</u>	<u>1.0</u>	<u>0.5</u>	<u>0.2</u>
Total	100	100	100	100	100
N	3076	623	414	1525	442

V. Appendix B: Survey Results by Question, Cont.

Message boards in classrooms, residence halls, and common spaces					
	TOTAL	Undergraduate Students	Graduate Students	Staff	Faculty
Extremely effective	7.1	12.5	7.2	5.4	5.4
Very effective	9.8	16.9	12.3	7.3	6.8
Somewhat effective	18.8	26.3	20.8	15.8	16.1
Not too effective	10.4	15.2	14.0	7.8	10.2
Not at all effective	7.7	12.5	8.9	4.7	10.6
I don't know/I am not familiar with this	8.3	6.3	9.2	9.6	6.1
Not applicable/I have not used this	37.5	10.1	26.6	49.0	44.6
No response	<u>0.4</u>	<u>0.2</u>	<u>1.0</u>	<u>0.4</u>	<u>0.2</u>
Total	100	100	100	100	100
N	3076	623	414	1525	442

I would like to see more safety-related content from the University of Arizona via:					
University-wide emails (e.g. from the President's Office, the Office of Public Safety)					
	TOTAL	Undergraduate Students	Graduate Students	Staff	Faculty
Agree strongly	28.6	38.4	30.9	27.5	16.7
Agree somewhat	29.4	30.0	30.9	30.3	24.2
Neither agree nor disagree	27.8	21.0	22.2	29.9	35.1
Disagree somewhat	7.3	5.9	7.2	6.7	12.2
Disagree strongly	5.7	3.7	7.7	4.5	10.6
No response	<u>1.1</u>	<u>1.0</u>	<u>1.0</u>	<u>1.1</u>	<u>1.1</u>
Total	100	100	100	100	100
N	3076	623	414	1525	442

V. Appendix B: Survey Results by Question, Cont.

University newsletter emails (e.g. Bear Down Rundown, Lo Que Pasa)					
	TOTAL	Undergraduate Students	Graduate Students	Staff	Faculty
Agree strongly	18.6	25.7	21.5	17.8	8.1
Agree somewhat	24.3	25.8	21.3	26.6	17.0
Neither agree nor disagree	37.7	33.1	35.0	38.8	42.5
Disagree somewhat	10.4	9.8	11.1	9.2	15.4
Disagree strongly	7.8	4.8	10.1	6.1	14.9
No response	<u>1.4</u>	<u>0.8</u>	<u>1.0</u>	<u>1.4</u>	<u>2.0</u>
Total	100	100	100	100	100
N	3076	623	414	1525	442
University podcasts					
	TOTAL	Undergraduate Students	Graduate Students	Staff	Faculty
Agree strongly	9.9	14.8	12.8	8.6	4.5
Agree somewhat	11.4	12.5	12.1	11.8	7.5
Neither agree nor disagree	49.8	45.4	43.5	53.3	49.1
Disagree somewhat	12.6	14.0	12.1	11.3	17.4
Disagree strongly	14.7	12.4	18.1	13.4	19.0
No response	<u>1.6</u>	<u>1.0</u>	<u>1.4</u>	<u>1.6</u>	<u>2.5</u>
Total	100	100	100	100	100
N	3076	623	414	1525	442
Office of Public Safety website					
	TOTAL	Undergraduate Students	Graduate Students	Staff	Faculty
Agree strongly	26.5	32.6	28.7	26.0	18.1
Agree somewhat	26.9	29.5	25.1	27.7	23.8
Neither agree nor disagree	35.2	28.4	33.1	37.8	37.3
Disagree somewhat	4.6	4.3	4.8	3.5	9.0
Disagree strongly	5.2	4.0	6.8	3.6	10.2
No response	<u>1.5</u>	<u>1.1</u>	<u>1.4</u>	<u>1.4</u>	<u>1.6</u>
Total	100	100	100	100	100
N	3076	623	414	1525	442

V. Appendix B: Survey Results by Question, Cont.

Posters or flyers in campus buildings	TOTAL	Undergraduate Students	Graduate Students	Staff	Faculty
	Agree strongly	23.4	34.7	29.2	19.5
Agree somewhat	28.5	35.0	31.4	26.4	25.3
Neither agree nor disagree	33.6	21.5	27.5	39.4	34.6
Disagree somewhat	6.8	3.9	4.8	7.1	13.1
Disagree strongly	6.1	3.9	5.3	6.1	9.7
No response	<u>1.6</u>	<u>1.1</u>	<u>1.7</u>	<u>1.6</u>	<u>2.3</u>
Total	100	100	100	100	100
N	3076	623	414	1525	442

Instagram	TOTAL	Undergraduate Students	Graduate Students	Staff	Faculty
	Agree strongly	15.5	29.2	24.2	11.5
Agree somewhat	16.8	25.0	19.6	14.7	10.2
Neither agree nor disagree	44.2	31.6	35.7	50.4	48.0
Disagree somewhat	8.3	5.6	6.3	9.0	12.2
Disagree strongly	13.2	7.4	12.1	12.7	23.8
No response	<u>1.9</u>	<u>1.1</u>	<u>2.2</u>	<u>1.6</u>	<u>3.6</u>
Total	100	100	100	100	100
N	3076	623	414	1525	442

X (formerly Twitter)	TOTAL	Undergraduate Students	Graduate Students	Staff	Faculty
	Agree strongly	11.2	17.8	17.1	9.4
Agree somewhat	12.2	15.7	16.4	11.2	7.2
Neither agree nor disagree	47.1	42.9	40.6	50.8	46.2
Disagree somewhat	9.7	9.8	7.5	9.9	11.8
Disagree strongly	17.9	12.7	16.2	17.0	29.0
No response	<u>1.9</u>	<u>1.1</u>	<u>2.2</u>	<u>1.6</u>	<u>3.2</u>
Total	100	100	100	100	100
N	3076	623	414	1525	442

V. Appendix B: Survey Results by Question, Cont.

Facebook	TOTAL	Undergraduate Students	Graduate Students	Staff	Faculty
	Agree strongly	10.9	15.7	15.7	10.0
Agree somewhat	12.6	13.3	14.5	13.0	8.6
Neither agree nor disagree	48.0	46.5	41.5	50.6	46.8
Disagree somewhat	9.7	10.0	8.7	9.6	12.0
Disagree strongly	16.9	13.2	17.4	15.0	27.1
No response	<u>1.9</u>	<u>1.3</u>	<u>2.2</u>	<u>1.7</u>	<u>3.2</u>
Total	100	100	100	100	100
N	3076	623	414	1525	442

LinkedIn	TOTAL	Undergraduate Students	Graduate Students	Staff	Faculty
	Agree strongly	8.6	13.2	13.5	7.1
Agree somewhat	10.6	13.5	13.0	10.0	6.1
Neither agree nor disagree	49.7	46.2	43.7	53.6	46.8
Disagree somewhat	10.6	11.2	8.9	10.6	12.2
Disagree strongly	18.6	14.4	18.4	17.1	29.4
No response	<u>1.9</u>	<u>1.4</u>	<u>2.4</u>	<u>1.5</u>	<u>3.2</u>
Total	100	100	100	100	100
N	3076	623	414	1525	442

YouTube	TOTAL	Undergraduate Students	Graduate Students	Staff	Faculty
	Agree strongly	9.4	15.1	13.8	7.5
Agree somewhat	12.7	15.9	13.0	12.2	9.3
Neither agree nor disagree	49.5	46.2	43.2	53.7	45.5
Disagree somewhat	10.0	10.1	9.4	10.0	11.8
Disagree strongly	16.5	11.2	18.1	15.1	26.7
No response	<u>1.9</u>	<u>1.4</u>	<u>2.4</u>	<u>1.5</u>	<u>2.9</u>
Total	100	100	100	100	100
N	3076	623	414	1525	442

Would you be interested in further training or educational opportunities about the following safety measures or topics?

Percent saying "yes" to each item

	TOTAL	Undergraduate Students	Graduate Students	Staff	Faculty
Using classroom door locks	55.6	71.1	68.8	46.7	53.4
Using Automated External Defibrillators (AEDs)	65.9	66.0	68.8	68.3	56.1
Being prepared in an active shooter situation	63.8	75.6	73.4	60.1	50.7
Handling concerning or threatening behavior	75.3	76.4	76.6	75.9	70.4
Reporting issues to the Threat Assessment and Management Team (TAMT)	64.8	66.0	66.9	66.0	56.6
Using 'stop the bleed' or bleeding control kits	69.6	74.6	75.8	70.0	57.0
Understanding building emergency plans	63.4	67.3	66.9	64.4	52.0
Participating in the UAPD Community Academy	30.1	31.1	33.8	31.0	21.7
Fire extinguisher usage and protocols	60.1	65.5	65.2	61.5	44.6
N	3076	623	414	1525	442

For each of the following possible safety initiatives, please indicate whether you think it should be a high priority, a low priority, or should not be a priority for the Office of Public Safety in the near future.

Expand mental health support for students to help prevent incidents.

	TOTAL	Undergraduate Students	Graduate Students	Staff	Faculty
Should be a high priority	86.0	82.8	83.8	88.2	85.7
Should be a low priority	6.7	9.6	10.4	4.7	6.6
Should not be a priority	1.7	1.4	1.9	1.5	2.0
I don't know	4.4	5.0	3.1	4.1	4.3
No response	<u>1.2</u>	<u>1.1</u>	<u>0.7</u>	<u>1.4</u>	<u>1.4</u>
Total	100	100	100	100	100
N	3076	623	414	1525	442

V. Appendix B: Survey Results by Question, Cont.

Expand mental health support for employees to help prevent incidents.

	TOTAL	Undergraduate Students	Graduate Students	Staff	Faculty
Should be a high priority	81.9	78.7	80.4	85.0	77.8
Should be a low priority	10.3	14.0	12.6	7.7	12.4
Should not be a priority	1.9	1.6	2.4	1.7	2.5
I don't know	4.6	4.7	3.4	4.1	5.7
No response	<u>1.3</u>	<u>1.1</u>	<u>1.2</u>	<u>1.4</u>	<u>1.6</u>
Total	100	100	100	100	100
N	3076	623	414	1525	442

Expand safe and affordable transportation options

	TOTAL	Undergraduate Students	Graduate Students	Staff	Faculty
Should be a high priority	64.4	77.8	74.9	60.1	51.6
Should be a low priority	21.3	14.9	17.6	22.5	29.6
Should not be a priority	4.9	2.2	2.7	6.2	6.6
I don't know	8.1	3.5	3.9	9.9	10.6
No response	<u>1.3</u>	<u>1.4</u>	<u>1.0</u>	<u>1.4</u>	<u>1.6</u>
Total	100	100	100	100	100
N	3076	623	414	1525	442

Improve lighting on sidewalks

	TOTAL	Undergraduate Students	Graduate Students	Staff	Faculty
Should be a high priority	61.2	67.7	68.1	60.2	49.8
Should be a low priority	25.0	23.8	23.7	24.1	31.2
Should not be a priority	4.2	4.0	3.6	3.7	6.8
I don't know	8.3	3.5	3.6	10.5	10.9
No response	<u>1.3</u>	<u>1.0</u>	<u>1.0</u>	<u>1.6</u>	<u>1.4</u>
Total	100	100	100	100	100
N	3076	623	414	1525	442

V. Appendix B: Survey Results by Question, Cont.

Improve lighting in parking garages					
	TOTAL	Undergraduate Students	Graduate Students	Staff	Faculty
Should be a high priority	65.2	64.4	66.9	67.0	58.8
Should be a low priority	20.7	23.9	22.5	18.5	22.9
Should not be a priority	4.5	5.8	4.8	3.5	5.7
I don't know	8.4	5.0	4.6	9.7	11.3
No response	<u>1.2</u>	<u>1.0</u>	<u>1.2</u>	<u>1.3</u>	<u>1.4</u>
Total	100	100	100	100	100
N	3076	623	414	1525	442

Expand sexual assault awareness and prevention programming					
	TOTAL	Undergraduate Students	Graduate Students	Staff	Faculty
Should be a high priority	72.8	74.8	74.4	73.6	65.6
Should be a low priority	16.4	16.1	18.1	15.2	19.9
Should not be a priority	2.9	2.4	3.6	2.5	3.8
I don't know	6.6	5.8	2.7	7.2	8.6
No response	<u>1.4</u>	<u>1.0</u>	<u>1.2</u>	<u>1.4</u>	<u>2.0</u>
Total	100	100	100	100	100
N	3076	623	414	1525	442

Add more security cameras around campus buildings					
	TOTAL	Undergraduate Students	Graduate Students	Staff	Faculty
Should be a high priority	55.3	62.9	59.9	54.3	43.2
Should be a low priority	24.2	23.3	20.8	23.5	32.8
Should not be a priority	9.3	7.2	11.4	8.8	11.5
I don't know	9.7	5.6	6.8	11.8	10.2
No response	<u>1.5</u>	<u>1.0</u>	<u>1.2</u>	<u>1.6</u>	<u>2.3</u>
Total	100	100	100	100	100
N	3076	623	414	1525	442

V. Appendix B: Survey Results by Question, Cont.

Add more security cameras in parking garages

	TOTAL	Undergraduate Students	Graduate Students	Staff	Faculty
Should be a high priority	63.5	69.7	65.7	62.2	56.1
Should be a low priority	19.6	18.9	17.1	19.8	23.5
Should not be a priority	6.6	5.0	10.1	5.8	8.4
I don't know	8.9	5.3	5.8	10.6	10.4
No response	<u>1.4</u>	<u>1.1</u>	<u>1.2</u>	<u>1.6</u>	<u>1.6</u>
Total	100	100	100	100	100
N	3076	623	414	1525	442

Improve or add sidewalks and pedestrian spaces

	TOTAL	Undergraduate Students	Graduate Students	Staff	Faculty
Should be a high priority	47.2	52.5	57.7	43.2	44.3
Should be a low priority	30.5	30.7	26.3	31.9	29.4
Should not be a priority	12.0	11.7	10.6	11.9	14.0
I don't know	8.7	4.0	3.9	11.3	9.7
No response	<u>1.6</u>	<u>1.1</u>	<u>1.4</u>	<u>1.6</u>	<u>2.5</u>
Total	100	100	100	100	100
N	3076	623	414	1525	442

Increase the number of police officers

	TOTAL	Undergraduate Students	Graduate Students	Staff	Faculty
Should be a high priority	37.2	35.2	37.0	40.1	30.8
Should be a low priority	26.7	32.9	24.9	23.7	29.6
Should not be a priority	19.7	21.8	26.1	17.2	20.1
I don't know	14.9	9.1	10.6	17.3	17.2
No response	<u>1.5</u>	<u>1.0</u>	<u>1.4</u>	<u>1.6</u>	<u>2.3</u>
Total	100	100	100	100	100
N	3076	623	414	1525	442

V. Appendix B: Survey Results by Question, Cont.

	Increase the number of campus security officers (unarmed)				
	TOTAL	Undergraduate Students	Graduate Students	Staff	Faculty
Should be a high priority	40.9	42.2	44.9	40.7	35.5
Should be a low priority	29.5	31.8	27.5	28.9	31.2
Should not be a priority	14.8	16.1	17.9	13.2	15.8
I don't know	13.4	9.0	8.2	15.5	15.6
No response	<u>1.5</u>	<u>1.0</u>	<u>1.4</u>	<u>1.6</u>	<u>1.8</u>
Total	100	100	100	100	100
N	3076	623	414	1525	442

	Improve or add building access restrictions/technology				
	TOTAL	Undergraduate Students	Graduate Students	Staff	Faculty
Should be a high priority	54.2	50.7	56.0	56.1	50.2
Should be a low priority	25.2	28.4	23.4	24.5	25.6
Should not be a priority	10.4	12.2	13.3	8.1	12.2
I don't know	8.7	7.5	5.6	9.7	9.7
No response	<u>1.6</u>	<u>1.1</u>	<u>1.7</u>	<u>1.6</u>	<u>2.3</u>
Total	100	100	100	100	100
N	3076	623	414	1525	442

	Increase safety-related social media posts				
	TOTAL	Undergraduate Students	Graduate Students	Staff	Faculty
Should be a high priority	24.2	28.7	28.5	23.5	14.0
Should be a low priority	32.3	37.2	28.7	32.4	29.9
Should not be a priority	26.7	23.8	31.9	24.4	35.1
I don't know	15.2	9.0	9.2	18.0	18.8
No response	<u>1.6</u>	<u>1.3</u>	<u>1.7</u>	<u>1.6</u>	<u>2.3</u>
Total	100	100	100	100	100
N	3076	623	414	1525	442

V. Appendix B: Survey Results by Question, Cont.

Implement anti-bias programs (e.g. in law enforcement, safety efforts)					
	TOTAL	Undergraduate Students	Graduate Students	Staff	Faculty
Should be a high priority	50.8	51.7	55.8	50.6	46.8
Should be a low priority	24.3	24.7	20.8	25.8	21.7
Should not be a priority	12.9	11.7	13.8	11.0	19.7
I don't know	10.6	10.8	7.7	11.1	9.7
No response	<u>1.5</u>	<u>1.1</u>	<u>1.9</u>	<u>1.5</u>	<u>2.0</u>
Total	100	100	100	100	100
N	3076	623	414	1525	442

Improve prevention of and response to hate crimes					
	TOTAL	Undergraduate Students	Graduate Students	Staff	Faculty
Should be a high priority	64.3	65.2	66.7	65.0	59.5
Should be a low priority	20.2	19.6	19.8	19.7	23.1
Should not be a priority	5.9	5.3	6.8	5.3	7.7
I don't know	8.2	8.8	5.1	8.5	7.9
No response	<u>1.5</u>	<u>1.1</u>	<u>1.7</u>	<u>1.5</u>	<u>1.8</u>
Total	100	100	100	100	100
N	3076	623	414	1525	442

Campus Health Service (CHS) Counseling and Psych Services (CAPS) is partnering with the University of Arizona Police Department (UAPD) to create an interdisciplinary team to address mental health crises on campus. This co-responder program would dispatch responders from both CAPS and UAPD, with CAPS clinicians acting as the primary responders. How supportive are you of the co-response model?

	TOTAL	Undergraduate Students	Graduate Students	Staff	Faculty
Very supportive	58.3	44.5	52.2	64.8	61.1
Supportive	25.6	34.5	28.5	21.8	23.5
Neither supportive nor unsupportive	11.7	15.4	13.0	10.1	10.0
Unsupportive	2.2	3.5	3.4	1.7	1.6
Very unsupportive	1.3	1.4	1.9	0.7	2.3
No response	<u>0.9</u>	<u>0.6</u>	<u>1.0</u>	<u>0.9</u>	<u>1.6</u>
Total	100	100	100	100	100
N	3076	623	414	1525	442

Please indicate whether each of the following safety measures makes you feel more safe or less safe when you are on campus.

Door locks on classrooms

Asked of those who say they spend time on Main Campus (including UAHS) more than never.

	TOTAL	Undergraduate Students	Graduate Students	Staff	Faculty
More safe	57.9	60.8	59.9	57.3	54.1
Neutral	35.9	33.1	32.2	37.1	39.1
Less safe	2.1	1.2	3.5	1.5	3.8
No response	<u>4.1</u>	<u>4.9</u>	<u>4.3</u>	<u>4.0</u>	<u>3.1</u>
Total	100	100	100	100	100
N	2,941	595	397	1,458	425

V. Appendix B: Survey Results by Question, Cont.

Restricted access to campus buildings (e.g. CatCard access)

Asked of those who say they spend time on Main Campus (including UAHS) more than never.

	TOTAL	Undergraduate Students	Graduate Students	Staff	Faculty
More safe	73.6	70.4	74.1	76.7	67.3
Neutral	20.2	22.0	19.1	18.1	26.1
Less safe	2.2	2.7	3.0	1.3	3.8
No response	<u>3.9</u>	<u>4.9</u>	<u>3.8</u>	<u>3.9</u>	<u>2.8</u>
Total	100	100	100	100	100
N	2,941	595	397	1,458	425

Security cameras in and/or around campus buildings

Asked of those who say they spend time on Main Campus (including UAHS) more than never.

	TOTAL	Undergraduate Students	Graduate Students	Staff	Faculty
More safe	62.7	68.2	64.7	61.9	56.0
Neutral	28.9	22.9	23.9	30.9	35.8
Less safe	4.3	3.9	7.1	3.4	5.2
No response	<u>4.1</u>	<u>5.0</u>	<u>4.3</u>	<u>3.9</u>	<u>3.1</u>
Total	100	100	100	100	100
N	2,941	595	397	1,458	425

Police officers on campus

Asked of those who say they spend time on Main Campus (including UAHS) more than never.

	TOTAL	Undergraduate Students	Graduate Students	Staff	Faculty
More safe	52.8	47.1	46.9	57.9	48.7
Neutral	29.5	31.3	29.5	26.6	36.5
Less safe	13.6	16.6	19.4	11.5	11.8
No response	<u>4.1</u>	<u>5.0</u>	<u>4.3</u>	<u>4.0</u>	<u>3.1</u>
Total	100	100	100	100	100
N	2,941	595	397	1,458	425

V. Appendix B: Survey Results by Question, Cont.

Campus security officers (unarmed) on campus

Asked of those who say they spend time on Main Campus (including UAHS) more than never.

	TOTAL	Undergraduate Students	Graduate Students	Staff	Faculty
More safe	53.5	50.6	53.9	54.8	52.2
Neutral	36.9	38.5	34.3	36.6	39.1
Less safe	5.4	5.9	7.6	4.7	5.6
No response	<u>4.1</u>	<u>5.0</u>	<u>4.3</u>	<u>4.0</u>	<u>3.1</u>
Total	100	100	100	100	100
N	2,941	595	397	1,458	425

Based on what you know, how effective is the University of Arizona Police Department (UAPD) at each of the following?

Preventing crime on campus

Asked of those who say they spend time on Main Campus (including UAHS) more than never.

	TOTAL	Undergraduate Students	Graduate Students	Staff	Faculty
Extremely effective	6.1	6.1	7.3	6.7	3.5
Very effective	14.1	10.8	11.3	16.6	12.5
Somewhat effective	23.4	27.1	19.1	23.7	21.9
Not too effective	13.4	19.7	17.9	9.9	13.4
Not at all effective	8.1	12.8	15.4	4.9	5.9
I don't know	30.2	18.5	23.9	33.7	39.8
No response	<u>4.6</u>	<u>5.2</u>	<u>5.0</u>	<u>4.5</u>	<u>3.1</u>
Total	100	100	100	100	100
N	2,941	595	397	1,458	425

V. Appendix B: Survey Results by Question, Cont.

Listening to the needs of your community

Asked of those who say they spend time on Main Campus (including UAHS) more than never.

	TOTAL	Undergraduate Students	Graduate Students	Staff	Faculty
Extremely effective	7.7	6.2	6.0	9.4	5.6
Very effective	15.0	13.1	8.3	18.6	12.5
Somewhat effective	21.4	20.3	20.9	21.0	24.9
Not too effective	10.7	15.5	12.3	8.5	9.6
Not at all effective	7.8	13.3	13.4	4.9	5.4
I don't know	32.7	25.9	34.0	33.1	38.8
No response	<u>4.7</u>	<u>5.7</u>	<u>5.0</u>	<u>4.5</u>	<u>3.1</u>
Total	100	100	100	100	100
N	2,941	595	397	1,458	425

Responding to mental health crises

Asked of those who say they spend time on Main Campus (including UAHS) more than never.

	TOTAL	Undergraduate Students	Graduate Students	Staff	Faculty
Extremely effective	5.1	6.1	4.8	5.6	2.6
Very effective	7.2	7.2	7.1	7.8	6.1
Somewhat effective	14.0	15.3	11.3	14.5	13.4
Not too effective	12.2	13.3	13.4	10.6	14.8
Not at all effective	9.8	14.3	16.1	7.2	7.1
I don't know	46.9	38.3	42.6	49.6	52.7
No response	<u>4.7</u>	<u>5.5</u>	<u>4.8</u>	<u>4.7</u>	<u>3.3</u>
Total	100	100	100	100	100
N	2,941	595	397	1,458	425

V. Appendix B: Survey Results by Question, Cont.

Treating your community with respect

Asked of those who say they spend time on Main Campus (including UAHS) more than never.

	TOTAL	Undergraduate Students	Graduate Students	Staff	Faculty
Extremely effective	16.0	14.5	13.6	18.7	11.3
Very effective	21.0	20.2	15.6	23.0	21.2
Somewhat effective	16.4	19.3	14.6	15.1	17.6
Not too effective	6.0	7.7	6.5	4.8	7.1
Not at all effective	5.6	8.1	9.8	4.0	4.2
I don't know	30.1	24.5	34.5	29.6	35.1
No response	<u>4.9</u>	<u>5.7</u>	<u>5.3</u>	<u>4.7</u>	<u>3.5</u>
Total	100	100	100	100	100
N	2,941	595	397	1,458	425

Responding with an appropriate number of police officers

Asked of those who say they spend time on Main Campus (including UAHS) more than never.

	TOTAL	Undergraduate Students	Graduate Students	Staff	Faculty
Extremely effective	8.9	8.9	8.6	9.7	7.3
Very effective	13.6	15.5	9.1	14.7	12.2
Somewhat effective	11.8	13.6	10.6	11.4	11.5
Not too effective	5.0	8.4	3.8	4.3	4.9
Not at all effective	5.0	6.7	9.8	3.6	3.1
I don't know	50.8	41.2	53.1	51.7	57.4
No response	<u>4.8</u>	<u>5.7</u>	<u>5.0</u>	<u>4.7</u>	<u>3.5</u>
Total	100	100	100	100	100
N	2,941	595	397	1,458	425

V. Appendix B: Survey Results by Question, Cont.

Responding quickly to reports of crime

Asked of those who say they spend time on Main Campus (including UAHS) more than never.

	TOTAL	Undergraduate Students	Graduate Students	Staff	Faculty
Extremely effective	11.8	10.9	10.1	13.4	8.7
Very effective	18.9	18.3	15.6	20.3	19.1
Somewhat effective	14.0	16.8	13.6	13.0	13.9
Not too effective	5.8	10.1	6.3	3.9	5.6
Not at all effective	6.2	10.6	10.8	4.0	4.0
I don't know	38.5	27.6	38.5	40.7	45.2
No response	<u>4.8</u>	<u>5.7</u>	<u>5.0</u>	<u>4.7</u>	<u>3.5</u>
Total	100	100	100	100	100
N	2,941	595	397	1,458	425

Responding to reports of sexual assault

Asked of those who say they spend time on Main Campus (including UAHS) more than never.

	TOTAL	Undergraduate Students	Graduate Students	Staff	Faculty
Extremely effective	8.4	8.1	8.1	9.6	4.9
Very effective	10.0	9.9	10.3	10.7	8.0
Somewhat effective	8.5	13.8	7.3	7.2	6.4
Not too effective	6.1	12.1	7.3	4.0	4.2
Not at all effective	6.9	12.8	11.6	4.5	3.1
I don't know	55.4	37.6	50.4	59.4	69.9
No response	<u>4.8</u>	<u>5.7</u>	<u>5.0</u>	<u>4.7</u>	<u>3.5</u>
Total	100	100	100	100	100
N	2,941	595	397	1,458	425

V. Appendix B: Survey Results by Question, Cont.

Holding officers accountable when misconduct occurs

Asked of those who say they spend time on Main Campus (including UAHS) more than never.

	TOTAL	Undergraduate Students	Graduate Students	Staff	Faculty
Extremely effective	6.6	6.7	6.5	7.3	4.2
Very effective	5.3	5.7	4.0	6.0	4.0
Somewhat effective	5.8	7.9	5.5	5.6	4.0
Not too effective	4.8	8.1	5.3	3.6	4.2
Not at all effective	8.4	13.3	13.1	6.0	5.9
I don't know	64.2	52.6	60.5	66.8	74.1
No response	<u>4.9</u>	<u>5.7</u>	<u>5.0</u>	<u>4.7</u>	<u>3.5</u>
Total	100	100	100	100	100
N	2,941	595	397	1,458	425

Treating all racial and ethnic groups fairly

Asked of those who say they spend time on Main Campus (including UAHS) more than never.

	TOTAL	Undergraduate Students	Graduate Students	Staff	Faculty
Extremely effective	10.4	11.6	10.8	11.2	5.9
Very effective	8.6	8.1	8.1	8.6	9.9
Somewhat effective	7.3	9.2	6.5	6.9	6.8
Not too effective	6.6	11.3	6.3	4.9	6.1
Not at all effective	6.6	9.1	11.1	5.1	4.5
I don't know	55.6	45.2	52.1	58.6	63.3
No response	<u>4.8</u>	<u>5.5</u>	<u>5.0</u>	<u>4.7</u>	<u>3.5</u>
Total	100	100	100	100	100
N	2,941	595	397	1,458	425

V. Appendix B: Survey Results by Question, Cont.

Treating all religious groups fairly

Asked of those who say they spend time on Main Campus (including UAHS) more than never.

	TOTAL	Undergraduate Students	Graduate Students	Staff	Faculty
Extremely effective	10.0	10.8	9.8	10.8	6.6
Very effective	8.2	8.2	8.6	7.9	8.7
Somewhat effective	7.6	10.9	6.5	6.9	5.9
Not too effective	4.3	7.1	4.0	3.4	4.2
Not at all effective	5.2	7.4	8.3	4.1	3.1
I don't know	59.8	49.9	57.7	62.1	68.0
No response	<u>4.9</u>	<u>5.7</u>	<u>5.0</u>	<u>4.7</u>	<u>3.5</u>
Total	100	100	100	100	100
N	2,941	595	397	1,458	425

Treating people with all gender identities fairly

Asked of those who say they spend time on Main Campus (including UAHS) more than never.

	TOTAL	Undergraduate Students	Graduate Students	Staff	Faculty
Extremely effective	10.1	10.8	10.6	11.1	6.1
Very effective	8.4	8.4	8.8	8.0	9.4
Somewhat effective	7.5	10.4	6.3	6.9	6.4
Not too effective	4.6	7.7	3.8	3.6	4.0
Not at all effective	5.9	8.1	9.6	4.9	3.3
I don't know	58.6	48.9	55.9	60.8	67.1
No response	<u>4.9</u>	<u>5.7</u>	<u>5.0</u>	<u>4.7</u>	<u>3.8</u>
Total	100	100	100	100	100
N	2,941	595	397	1,458	425

V. Appendix B: Survey Results by Question, Cont.

I would contact the University of Arizona Police Department (UAPD) if:

I observe suspicious activity

Asked of those who say they spend time on Main Campus (including UAHS) more than never.

	TOTAL	Undergraduate Students	Graduate Students	Staff	Faculty
Agree strongly	42.3	28.7	36.3	48.4	44.9
Agree somewhat	31.0	34.5	29.5	30.1	31.1
Neither agree nor disagree	11.5	14.3	14.1	9.5	12.7
Disagree somewhat	6.3	10.9	7.3	4.4	5.6
Disagree strongly	4.1	6.4	7.3	3.1	2.1
No response	<u>4.7</u>	<u>5.2</u>	<u>5.5</u>	<u>4.6</u>	<u>3.5</u>
Total	100	100	100	100	100
N	2,941	595	397	1,458	425

I need a jumpstart for my motor vehicle

Asked of those who say they spend time on Main Campus (including UAHS) more than never.

	TOTAL	Undergraduate Students	Graduate Students	Staff	Faculty
Agree strongly	10.6	9.7	11.6	9.9	12.5
Agree somewhat	12.4	9.9	16.6	11.8	14.8
Neither agree nor disagree	18.5	18.8	13.9	18.9	20.2
Disagree somewhat	20.2	23.7	21.4	18.6	19.8
Disagree strongly	33.5	32.8	31.0	35.9	29.4
No response	<u>4.8</u>	<u>5.0</u>	<u>5.5</u>	<u>4.8</u>	<u>3.3</u>
Total	100	100	100	100	100
N	2,941	595	397	1,458	425

V. Appendix B: Survey Results by Question, Cont.

I observe or know of someone who has a weapon on campus

Asked of those who say they spend time on Main Campus (including UAHS) more than never.

	TOTAL	Undergraduate Students	Graduate Students	Staff	Faculty
Agree strongly	73.4	58.7	68.8	78.6	80.7
Agree somewhat	14.7	24.9	16.9	11.4	10.1
Neither agree nor disagree	3.5	4.7	3.5	2.9	3.3
Disagree somewhat	1.4	1.7	2.0	1.1	1.2
Disagree strongly	2.4	4.7	3.5	1.4	1.4
No response	<u>4.7</u>	<u>5.4</u>	<u>5.3</u>	<u>4.5</u>	<u>3.3</u>
Total	100	100	100	100	100
N	2,941	595	397	1,458	425

I discover damaged or vandalized college property

Asked of those who say they spend time on Main Campus (including UAHS) more than never.

	TOTAL	Undergraduate Students	Graduate Students	Staff	Faculty
Agree strongly	37.1	18.8	27.7	44.6	43.5
Agree somewhat	25.6	21.5	26.2	25.7	30.1
Neither agree nor disagree	14.8	22.7	14.9	12.4	12.0
Disagree somewhat	10.2	18.0	14.4	7.1	7.8
Disagree strongly	7.5	13.6	11.6	5.5	3.1
No response	<u>4.8</u>	<u>5.4</u>	<u>5.3</u>	<u>4.7</u>	<u>3.5</u>
Total	100	100	100	100	100
N	2,941	595	397	1,458	425

I witness someone being threatened

Asked of those who say they spend time on Main Campus (including UAHS) more than never.

	TOTAL	Undergraduate Students	Graduate Students	Staff	Faculty
Agree strongly	59.3	45.2	50.1	65.4	65.6
Agree somewhat	25.5	31.6	27.7	22.8	25.4
Neither agree nor disagree	6.2	10.9	8.6	4.5	3.3
Disagree somewhat	2.3	4.0	5.0	1.2	0.9
Disagree strongly	2.1	2.9	3.3	1.6	1.4
No response	<u>4.7</u>	<u>5.4</u>	<u>5.3</u>	<u>4.5</u>	<u>3.3</u>
Total	100	100	100	100	100
N	2,941	595	397	1,458	425

V. Appendix B: Survey Results by Question, Cont.

I need medical services/assistance					
<i>Asked of those who say they spend time on Main Campus (including UAHS) more than never.</i>					
	TOTAL	Undergraduate Students	Graduate Students	Staff	Faculty
Agree strongly	42.5	41.3	34.5	44.5	43.8
Agree somewhat	18.3	22.4	17.6	17.5	16.5
Neither agree nor disagree	11.3	8.9	12.6	11.3	13.4
Disagree somewhat	11.1	10.9	13.6	10.4	11.1
Disagree strongly	12.1	10.9	16.4	11.7	12.0
No response	<u>4.7</u>	<u>5.5</u>	<u>5.3</u>	<u>4.6</u>	<u>3.3</u>
Total	100	100	100	100	100
N	2,941	595	397	1,458	425
I experience an on-campus theft of my personal or college owned property					
<i>Asked of those who say they spend time on Main Campus (including UAHS) more than never.</i>					
	TOTAL	Undergraduate Students	Graduate Students	Staff	Faculty
Agree strongly	69.1	60.0	59.9	73.8	72.9
Agree somewhat	17.2	23.5	20.9	13.9	17.4
Neither agree nor disagree	4.0	5.4	5.0	3.6	2.6
Disagree somewhat	2.3	2.7	4.3	1.9	1.4
Disagree strongly	2.7	2.9	4.5	2.3	2.1
No response	<u>4.7</u>	<u>5.5</u>	<u>5.3</u>	<u>4.5</u>	<u>3.5</u>
Total	100	100	100	100	100
N	2,941	595	397	1,458	425
I witness a crime					
<i>Asked of those who say they spend time on Main Campus (including UAHS) more than never.</i>					
	TOTAL	Undergraduate Students	Graduate Students	Staff	Faculty
Agree strongly	78.1	71.3	70.3	81.5	82.6
Agree somewhat	11.2	16.1	14.6	9.1	9.4
Neither agree nor disagree	3.2	3.4	4.8	2.9	2.6
Disagree somewhat	1.0	1.3	2.3	0.6	0.5
Disagree strongly	1.9	2.7	2.8	1.4	1.6
No response	<u>4.6</u>	<u>5.2</u>	<u>5.3</u>	<u>4.5</u>	<u>3.3</u>
Total	100	100	100	100	100
N	2,941	595	397	1,458	425

V. Appendix B: Survey Results by Question, Cont.

I experience a hate crime <i>Asked of those who say they spend time on Main Campus (including UAHS) more than never.</i>	TOTAL	Undergraduate Students	Graduate Students	Staff	Faculty
Agree strongly	66.2	50.8	55.4	72.4	75.8
Agree somewhat	14.7	21.2	19.6	11.7	12.0
Neither agree nor disagree	7.4	9.6	9.8	6.7	4.7
Disagree somewhat	3.8	7.7	5.0	2.5	2.4
Disagree strongly	3.3	5.4	4.8	2.1	1.9
No response	<u>4.7</u>	<u>5.4</u>	<u>5.3</u>	<u>4.5</u>	<u>3.3</u>
Total	100	100	100	100	100
N	2,941	595	397	1,458	425

I have been sexually assaulted <i>Asked of those who say they spend time on Main Campus (including UAHS) more than never.</i>	TOTAL	Undergraduate Students	Graduate Students	Staff	Faculty
Agree strongly	72.4	60.0	63.0	77.9	78.1
Agree somewhat	10.3	14.5	14.1	8.2	8.7
Neither agree nor disagree	5.4	7.7	5.8	4.7	4.9
Disagree somewhat	3.1	6.6	5.5	1.7	0.9
Disagree strongly	4.1	5.7	6.0	2.9	4.0
No response	<u>4.7</u>	<u>5.5</u>	<u>5.5</u>	<u>4.5</u>	<u>3.3</u>
Total	100	100	100	100	100
N	2,941	595	397	1,458	425

I have general questions about the police department <i>Asked of those who say they spend time on Main Campus (including UAHS) more than never.</i>	TOTAL	Undergraduate Students	Graduate Students	Staff	Faculty
Agree strongly	27.1	19.2	22.4	30.7	27.3
Agree somewhat	22.8	17.8	22.2	24.1	27.8
Neither agree nor disagree	24.4	26.6	23.2	23.3	27.1
Disagree somewhat	9.7	14.1	10.6	8.8	6.6
Disagree strongly	11.1	16.6	16.4	8.3	8.0
No response	<u>4.9</u>	<u>5.7</u>	<u>5.3</u>	<u>4.8</u>	<u>3.3</u>
Total	100	100	100	100	100
N	2,941	595	397	1,458	425

The University is required to do fire drills in the residence halls. Would you be in favor of or opposed to having annual fire drills and/or evacuation drills in the other building or buildings on campus where you spend the most time?

Asked of those who say they spend time on Main Campus (including UAHS) more than never.

	TOTAL	Undergraduate Students	Graduate Students	Staff	Faculty
In favor of annual fire or evacuation drills	58.9	44.2	56.2	67.0	53.6
Neutral	28.9	35.8	28.7	25.3	32.2
Opposed to annual fire or evacuation drills	7.7	15.0	9.8	3.4	11.1
No response	<u>4.5</u>	<u>5.0</u>	<u>5.3</u>	<u>4.3</u>	<u>3.1</u>
Total	100	100	100	100	100
N	2,941	595	397	1,458	425

The Office of Public Safety is exploring the possibility of implementing a bike safety program where bike owners could pay an annual fee of about \$15-20 to have an air tag installed in their bike to aid UAPD in recovering the bike in the event that it is stolen. How interested would you be in using this potential bike safety program?

Asked of those who say they spend time on Main Campus (including UAHS) more than never.

	TOTAL	Undergraduate Students	Graduate Students	Staff	Faculty
Extremely interested	20.5	20.7	21.9	19.7	22.6
Very interested	11.0	11.9	10.6	10.6	11.3
Somewhat interested	11.1	12.1	14.1	9.7	11.8
Not too interested	4.3	4.4	5.5	3.7	4.7
Not at all interested	4.6	4.5	4.8	4.3	5.4
Not applicable - I don't have or ride a bike on campus	44.3	41.3	38.3	47.9	41.4
No response	<u>4.2</u>	<u>5.0</u>	<u>4.8</u>	<u>4.00</u>	<u>2.8</u>
Total	100	100	100	100	100
N	2,941	595	397	1,458	425